

Recombinant Human TMUB1 Protein, Myc/DDK-tagged, C13 and N15-labeled

Cat. No. TMUB1-2444H Lot. No. (See product label)

SPECIFICATION

Product Overview	TMUB1 MS Standard C13 and N15-labeled recombinant protein (NP_001129516) with a C-terminal MYC/DDK tag, was expressed in HEK293 cells.
Species	Human
Source	HEK293
Description	Involved in sterol-regulated ubiquitination and degradation of HMG-CoA reductase HMGCR. Involved in positive regulation of AMPA-selective glutamate receptor GRIA2 recycling to the cell surface. Acts as negative regulator of hepatocyte growth during regeneration.
Molecular Mass	26.1 kDa
AA Sequence	MTLIEGVGDEVTVLFSVLACLLVLALAWVSTHTAEGGDPLPQPSGTPTPSQPSAAMA ATDSMRGEAPGAETPSLRHRGQAAQPEPSTGFTATPPAPDSPQEPLVLRKFLNDS EQVARAWPHDTIGSLKRTQFPGREQQVRLIYQGQLLGDGDTQLGSLHLPNCVLHC HVSTRVGPNNPPCPPGSEPGPSGLEIGSLLLPLLLLLLLLLLWYCQIQYRPFPLTATL GLAGFTLLLSLLAFAMYRPTTRTRPLEQKLISEEDLAANDILDYKDDDDKV
Purity	> 80% as determined by SDS-PAGE and Coomassie blue staining
Stability	Stable for 3 months from receipt of products under proper storage and handling conditions.

 Tel: 1-631-559-9269 1-516-512-3133

 Email: info@creative-biomart.com  Fax: 1-631-938-8127

 45-1 Ramsey Road, Shirley, NY 11967, USA

Storage	Store at -80 centigrade. Avoid repeated freeze-thaw cycles.
Concentration	50 µg/mL as determined by BCA
Storage Buffer	100 mM glycine, 25 mM Tris-HCl, pH 7.3.
GENE INFORMATION	
Gene Name	TMUB1 transmembrane and ubiquitin-like domain containing 1 [Homo sapiens (human)]
Official Symbol	TMUB1
Synonyms	TMUB1; transmembrane and ubiquitin-like domain containing 1; C7orf21, chromosome 7 open reading frame 21; transmembrane and ubiquitin-like domain-containing protein 1; SB144; ubiquitin-like protein DULP; ubiquitin-like protein SB144; hepatocyte odd protein shuttling protein; C7orf21; MGC5442;
Gene ID	83590
mRNA Refseq	NM_001136044
Protein Refseq	NP_001129516
MIM	614792
UniProt ID	Q9BVT8

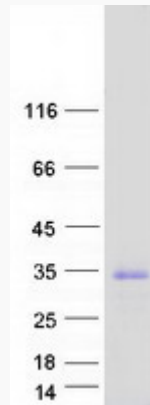
 Tel: 1-631-559-9269 1-516-512-3133

 Email: info@creative-biomart.com  Fax: 1-631-938-8127

 45-1 Ramsey Road, Shirley, NY 11967, USA



SDS-PAGE



Tel: 1-631-559-9269 1-516-512-3133

Email: info@creative-biomart.com Fax: 1-631-938-8127

45-1 Ramsey Road, Shirley, NY 11967, USA