

Recombinant Human TMX2 Protein, MYC/DDK-tagged, C13 and N15-labeled

Cat. No. TMX2-249H **Lot. No.** (See product label)

SPECIFICATION

Product Overview

TMX2 MS Standard C13 and N15-labeled recombinant protein (NP_057043) with a C-terminal MYC/DDK tag, was expressed in HEK293 cells.

Species

Human

Source

HEK293

Description

This gene encodes a member of the disulfide isomerase (PDI) family of endoplasmic reticulum (ER) proteins that catalyze protein folding and thiol-disulfide interchange reactions. The encoded protein has an N-terminal ER-signal sequence, a catalytically active thioredoxin domain, one transmembrane domain and a C-terminal ER-retention sequence. This protein is enriched on the mitochondria-associated-membrane of the ER via palmitoylation of two of its cytosolically exposed cysteines. [provided by RefSeq, Jan 2017]

Molecular Mass

34 kDa

AA Sequence

MAVLAPLIALVYSVPRLSRWLAQPYYLLSALLSAAFLLVRKLPPLCHGLPTQREDGNP
 CDFDWREVEILMFLSAIVMMKNRRSITVEQHIGNIFMFSKVANTILFFRLDIRMGLLYIT
 LCIVFLMTCKPPLYMGPEYIKYFNDKTIDEELERDKRVTWIVEFFANWSNDCQSFAP
 YADLSLKYNCTGLNFGKVDVGRYTDVSTRYKVSTSPLTKQLPTLILFQGGKEAMRRP
 QIDKKGRAVSWTFSEENVIREFNLNELYQRAKKLSKAGDNIPEEQPVASTPTTVSDG
 ENKKDKTRTRPLEQKLISEEDLAANDILDYKDDDDKV

 Tel: 1-631-559-9269 1-516-512-3133

 Email: info@creative-biomart.com  Fax: 1-631-938-8127

 45-1 Ramsey Road, Shirley, NY 11967, USA

Purity	> 80% as determined by SDS-PAGE and Coomassie blue staining
Stability	Stable for 3 months from receipt of products under proper storage and handling conditions.
Storage	Store at -80 centigrade. Avoid repeated freeze-thaw cycles.
Concentration	50 µg/mL as determined by BCA
Storage Buffer	100 mM glycine, 25 mM Tris-HCl, pH 7.3.

GENE INFORMATION

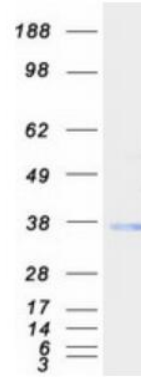
Gene Name	TMX2 thioredoxin-related transmembrane protein 2 [Homo sapiens (human)]
Official Symbol	TMX2
Synonyms	PIG26; CGI-31; PDIA12; TXNDC14
Gene ID	51075
mRNA Refseq	NM_015959
Protein Refseq	NP_057043
MIM	616715
UniProt ID	Q9Y320

 Tel: 1-631-559-9269 1-516-512-3133

 Email: info@creative-biomart.com  Fax: 1-631-938-8127

 45-1 Ramsey Road, Shirley, NY 11967, USA

SDS-PAGE



 Tel: 1-631-559-9269 1-516-512-3133

 Email: info@creative-biomart.com  Fax: 1-631-938-8127

 45-1 Ramsey Road, Shirley, NY 11967, USA