

Recombinant Human TMX4 Protein, Myc/DDK-tagged, C13 and N15-labeled

Cat. No. TMX4-6563H **Lot. No.** (See product label)

SPECIFICATION

Product Overview	TMX4 MS Standard C13 and N15-labeled recombinant protein (NP_066979) with a C-terminal MYC/DDK tag, was expressed in HEK293 cells.
Species	Human
Source	HEK293
Description	This gene encodes a member of the disulfide isomerase (PDI) family of endoplasmic reticulum (ER) proteins that catalyze protein folding and thiol-disulfide interchange reactions. The encoded protein has an N-terminal ER-signal sequence, a catalytically active thioredoxin domain, one transmembrane domain and C-terminal ASP/GLU-rich calcium binding domain. Unlike most members of this gene family, it lacks a C-terminal ER-retention sequence. The encoded protein has been shown to have reductase activity in vitro.
Molecular Mass	38.8 kDa
AA Sequence	MAGGRCGPQLTALLAAWIAAVAATAGPEEAALPPEQSRVQPMTASNWTLVMEGEW MLKFYAPWCPSCQQT DSEWEAFKNGEILQISVGKVDVIQEPGLSGRFFVTTLPAFF HAKDGIFRRYRGP GIFEDLQNYILEKKWQSVEPLTGWKSPASLTMSGMAGLFSISGK IWHLHNYFTVTLGIPAWCSYVFFVIATLVFGLFMGLVLLVISECFYVPLPRHLSERSEQ NRRSEEAHRAEQLQDAEEEEKDDSNEEENKDSLVDDEEEKEDLGDEDEAEEEEEED NLAAGVDEERSEANDQGPPGEDGV TREEVEPEEAEEGISEQPCPADTEVVEDSLR

 Tel: 1-631-559-9269 1-516-512-3133

 Email: info@creative-biomart.com  Fax: 1-631-938-8127

 45-1 Ramsey Road, Shirley, NY 11967, USA

QRKSQHADKGLTRTRPLEQKLISEEDLAANDILDYKDDDDKV

Purity > 80% as determined by SDS-PAGE and Coomassie blue staining

Stability Stable for 3 months from receipt of products under proper storage and handling conditions.

Storage Store at -80 centigrade. Avoid repeated freeze-thaw cycles.

Concentration 50 µg/mL as determined by BCA

Storage Buffer 100 mM glycine, 25 mM Tris-HCl, pH 7.3.

GENE INFORMATION

Gene Name [TMX4 thioredoxin-related transmembrane protein 4 \[Homo sapiens \(human\) \]](#)

Official Symbol [TMX4](#)

Synonyms TMX4; thioredoxin-related transmembrane protein 4; thioredoxin domain containing 13, TXNDC13; DJ971N18.2; KIAA1162; PDIA14; protein disulfide isomerase family A; member 14; thioredoxin domain containing 13; thioredoxin domain-containing protein 13; protein disulfide isomerase family A, member 14; TXNDC13;

Gene ID [56255](#)

mRNA Refseq [NM_021156](#)

Protein Refseq [NP_066979](#)

MIM [616766](#)

 Tel: 1-631-559-9269 1-516-512-3133

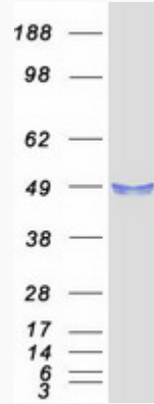
 Email: info@creative-biomart.com  Fax: 1-631-938-8127

 45-1 Ramsey Road, Shirley, NY 11967, USA

UniProt ID

Q9H1E5

SDS-PAGE



 Tel: 1-631-559-9269 1-516-512-3133

 Email: info@creative-biomart.com  Fax: 1-631-938-8127

 45-1 Ramsey Road, Shirley, NY 11967, USA