

## Active Recombinant Human TNF protein

Cat. No. TNF-246H Lot. No. (See product label)

### SPECIFICATION

<b>Product Overview</b>	Active Recombinant Human TNF protein(NP_000585.2) (Val 77-Leu 233) was expressed in E. coli, with an initial Met at the N-terminus.
<b>Species</b>	Human
<b>Source</b>	E. coli
<b>ProteinLength</b>	77-233 aa
<b>Form</b>	Lyophilized from sterile PBS, pH 7.4.
<b>Bio-activity</b>	Measured in a cytotoxicity assay using L929 mouse fibrosarcoma cells in the presence of the metabolic inhibitor actinomycin D. The ED50 for this effect is typically 20-100 pg/ml, corresponding to a specific activity of 3 x 10E6 - 2 x 10E7 units/mg.
<b>Molecular Mass</b>	The recombinant human TNF- $\alpha$ consists of 158 amino acids and has a predicted molecular mass of 17.4 kDa which is also estimated by SDS-PAGE.
<b>Purity</b>	> 95 % as determined by SDS-PAGE
<b>Storage</b>	Store it under sterile conditions at -20°C to -80°C upon receiving. Recommend to aliquot the protein into smaller quantities for optimal storage. Avoid repeated freeze-thaw cycles.
<b>Reconstitution</b>	It is recommended that sterile water be added to the vial to prepare a stock solution of

 Tel: 1-631-559-9269 1-516-512-3133

 Email: [info@creative-biomart.com](mailto:info@creative-biomart.com)  Fax: 1-631-938-8127

 45-1 Ramsey Road, Shirley, NY 11967, USA

0.2 ug/ul. Centrifuge the vial at 4°C before opening to recover the entire contents.

## GENE INFORMATION

**Gene Name** TNF tumor necrosis factor [ Homo sapiens ]

**Official Symbol** TNF

**Synonyms** TNF; tumor necrosis factor; TNFA, tumor necrosis factor (TNF superfamily, member 2); DIF; TNF superfamily; member 2; TNF alpha; TNFSF2; TNF-a; cachectin; APC1 protein; TNF, monocyte-derived; TNF, macrophage-derived; TNF superfamily, member 2; tumor necrosis factor alpha; tumor necrosis factor-alpha; tumor necrosis factor ligand superfamily member 2; TNFA; TNF-alpha;

**Gene ID** 7124

**mRNA Refseq** NM\_000594

**Protein Refseq** NP\_000585

**MIM** 191160

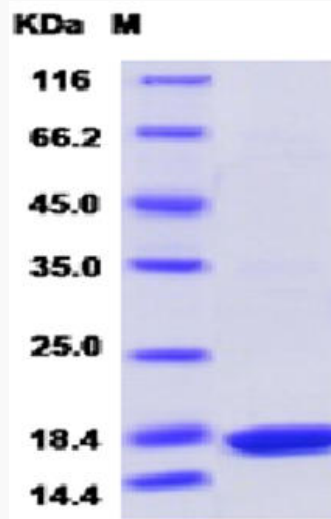
**UniProt ID** P01375

 Tel: 1-631-559-9269 1-516-512-3133

 Email: [info@creative-biomart.com](mailto:info@creative-biomart.com)  Fax: 1-631-938-8127

 45-1 Ramsey Road, Shirley, NY 11967, USA

SDS-PAGE



 Tel: 1-631-559-9269 1-516-512-3133

 Email: [info@creative-biomart.com](mailto:info@creative-biomart.com)  Fax: 1-631-938-8127

 45-1 Ramsey Road, Shirley, NY 11967, USA