

Recombinant Human TNF protein, His-Avi-tagged

Cat. No. TNF-311H Lot. No. (See product label)

SPECIFICATION

Product Overview	Recombinant Human TNF protein(P01375)(Val77-Leu233), fused with C-terminal His and Avi tag, was expressed in HEK293.
Species	Human
Source	HEK293
ProteinLength	Val77-Leu233
Tag	C-His-Avi
Form	Lyophilized from 0.22µm filtered solution in PBS (pH 7.4). Normally 5% trehalose is added as protectant before lyophilization.
Bio-activity	Immobilized Human TNF alpha, His Tag at 5µg/ml (100µl/well) on the plate. Dose response curve for Human TNFR2, mFc Tag with the EC50 of 45.8ng/ml determined by ELISA.
Molecular Mass	The protein has a predicted MW of 20.3 kDa. Due to glycosylation, the protein migrates to 21-25 kDa based on Tris-Bis PAGE result.
Endotoxin	Less than 1EU per µg by the LAL method.
Purity	> 95% as determined by Tris-Bis PAGE; > 95% as determined by HPLC

 Tel: 1-631-559-9269 1-516-512-3133

 Email: info@creative-biomart.com  Fax: 1-631-938-8127

 45-1 Ramsey Road, Shirley, NY 11967, USA

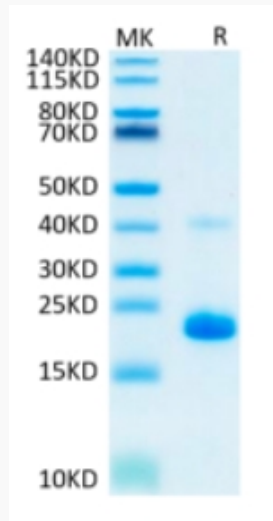
Storage	Reconstituted protein stable at -80°C for 12 months, 4°C for 1 week. Use a manual defrost freezer and avoid repeated freeze-thaw cycles.
Reconstitution	Centrifuge tubes before opening. Reconstituting to a concentration more than 100 µg/ml is recommended. Dissolve the lyophilized protein in distilled water.
GENE INFORMATION	
Gene Name	TNF tumor necrosis factor [Homo sapiens]
Official Symbol	TNF
Synonyms	TNF; tumor necrosis factor; TNFA, tumor necrosis factor (TNF superfamily, member 2); DIF; TNF superfamily; member 2; TNF alpha; TNFSF2; TNF-a; cachectin; APC1 protein; TNF, monocyte-derived; TNF, macrophage-derived; TNF superfamily, member 2; tumor necrosis factor alpha; tumor necrosis factor-alpha; tumor necrosis factor ligand superfamily member 2; TNFA; TNF-alpha;
Gene ID	7124
mRNA Refseq	NM_000594
Protein Refseq	NP_000585
MIM	191160
UniProt ID	P01375

 Tel: 1-631-559-9269 1-516-512-3133

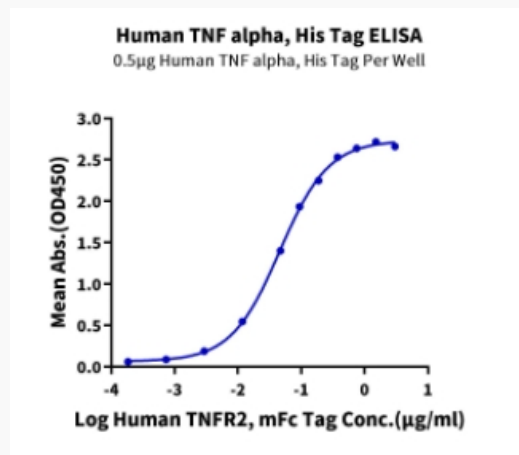
 Email: info@creative-biomart.com  Fax: 1-631-938-8127

 45-1 Ramsey Road, Shirley, NY 11967, USA

Tris-Bis PAGE



ELISA Data



 Tel: 1-631-559-9269 1-516-512-3133

 Email: info@creative-biomart.com  Fax: 1-631-938-8127

 45-1 Ramsey Road, Shirley, NY 11967, USA