

# Recombinant Human TNFRSF10A Protein (Met1-Asn239), C-His tagged

**Cat. No.** TNFRSF10A-5249H    **Lot. No.** (See product label)

## SPECIFICATION

<b>Product Overview</b>	Recombinant human TNFRSF10A (Met1-Asn239) fused with the C-terminal His tag was expressed in Mammalian cells.
<b>Species</b>	Human
<b>Source</b>	Mammalian Cells
<b>ProteinLength</b>	Met1-Asn239
<b>Form</b>	Lyophilized powder/frozen liquid
<b>Molecular Mass</b>	26.29 kDa
<b>Endotoxin</b>	< 1.0 EU/μg of the protein as determined by the LAL method.
<b>Purity</b>	>90% as determined by SDS-PAGE.
<b>Notes</b>	For research use only.
<b>Storage</b>	Use a manual defrost freezer and avoid repeated freeze thaw cycles. Store at 2 to 8 centigrade for one week. Store at -20 to -80 centigrade for twelve months from the date of receipt.
<b>Storage Buffer</b>	Supplied as solution form in PBS or lyophilized from PBS.

 Tel: 1-631-559-9269    1-516-512-3133

 Email: [info@creative-biomart.com](mailto:info@creative-biomart.com)     Fax: 1-631-938-8127

 45-1 Ramsey Road, Shirley, NY 11967, USA

**Reconstitution** Reconstitute in sterile water for a stock solution.

**Shipping** They are shipped out with dry ice/blue ice unless customers require otherwise.

## GENE INFORMATION

**Gene Name** TNFRSF10A tumor necrosis factor receptor superfamily, member 10a [ Homo sapiens (human) ]

**Official Symbol** TNFRSF10A

**Synonyms** TNFRSF10A; tumor necrosis factor receptor superfamily, member 10a; tumor necrosis factor receptor superfamily member 10A; Apo2; CD261; DR4; TRAILR 1; TRAIL-R1; TRAIL receptor 1; death receptor 4; cytotoxic TRAIL receptor; TNF-related apoptosis-inducing ligand receptor 1; tumor necrosis factor receptor superfamily member 10a variant 2; APO2; TRAILR1; TRAILR-1; MGC9365;

**Gene ID** 8797

**mRNA Refseq** NM\_003844

**Protein Refseq** NP\_003835

**MIM** 603611

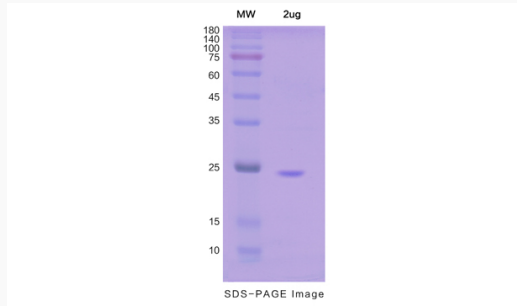
**UniProt ID** O00220

 Tel: 1-631-559-9269 1-516-512-3133

 Email: [info@creative-biomart.com](mailto:info@creative-biomart.com)  Fax: 1-631-938-8127

 45-1 Ramsey Road, Shirley, NY 11967, USA

**SDS-PAGE**



 Tel: 1-631-559-9269 1-516-512-3133

 Email: [info@creative-biomart.com](mailto:info@creative-biomart.com)  Fax: 1-631-938-8127

 45-1 Ramsey Road, Shirley, NY 11967, USA