

Recombinant Human TNFRSF10D Protein (Met1-His211), C-His tagged

Cat. No. TNFRSF10D-5245H Lot. No. (See product label)

SPECIFICATION

Product Overview	Recombinant human TNFRSF10D (Met1-His211) fused with the C-terminal His tag was expressed in Mammalian cells.
Species	Human
Source	Mammalian Cells
ProteinLength	Met1-His211
Form	Lyophilized powder/frozen liquid
Molecular Mass	23.21 kDa
Endotoxin	< 1.0 EU/μg of the protein as determined by the LAL method.
Purity	>90% as determined by SDS-PAGE.
Notes	For research use only.
Storage	Use a manual defrost freezer and avoid repeated freeze thaw cycles. Store at 2 to 8 centigrade for one week. Store at -20 to -80 centigrade for twelve months from the date of receipt.
Storage Buffer	Supplied as solution form in PBS or lyophilized from PBS.

 Tel: 1-631-559-9269 1-516-512-3133

 Email: info@creative-biomart.com  Fax: 1-631-938-8127

 45-1 Ramsey Road, Shirley, NY 11967, USA

Reconstitution Reconstitute in sterile water for a stock solution.

Shipping They are shipped out with dry ice/blue ice unless customers require otherwise.

GENE INFORMATION

Gene Name TNFRSF10D tumor necrosis factor receptor superfamily, member 10d, decoy with truncated death domain [Homo sapiens (human)]

Official Symbol TNFRSF10D

Synonyms TNFRSF10D; tumor necrosis factor receptor superfamily, member 10d, decoy with truncated death domain; tumor necrosis factor receptor superfamily member 10D; CD264; DcR2; TRAILR4; TRUNDD; TRAIL receptor 4; decoy receptor 2; decoy with truncated death domain; TNF receptor-related receptor for TRAIL; TRAIL receptor with a truncated death domain; TNF-related apoptosis-inducing ligand receptor 4; DCR2; TRAIL-R4;

Gene ID 8793

mRNA Refseq NM_003840

Protein Refseq NP_003831

MIM 603614

UniProt ID Q9UBN6

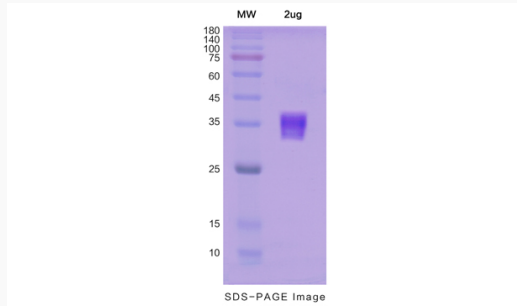
 Tel: 1-631-559-9269 1-516-512-3133

 Email: info@creative-biomart.com  Fax: 1-631-938-8127

 45-1 Ramsey Road, Shirley, NY 11967, USA



SDS-PAGE



Tel: 1-631-559-9269 1-516-512-3133

Email: info@creative-biomart.com Fax: 1-631-938-8127

45-1 Ramsey Road, Shirley, NY 11967, USA