

## Recombinant Human TNFRSF11B Protein (Glu22-Leu401), C-His tagged

Cat. No. TNFRSF11B-5882H Lot. No. (See product label)

### SPECIFICATION

<b>Product Overview</b>	Recombinant human TNFRSF11B (Glu22-Leu401) fused with the C-terminal His tag was expressed in mammalian cells.
<b>Species</b>	Human
<b>Source</b>	Mammalian Cells
<b>ProteinLength</b>	Glu22-Leu401
<b>Form</b>	Lyophilized powder/frozen liquid
<b>Molecular Mass</b>	41.8 kDa
<b>Purity</b>	> 90 % as determined by SDS-PAGE
<b>Notes</b>	For research use only.
<b>Storage</b>	Use a manual defrost freezer and avoid repeated freeze thaw cycles. Store at 2 to 8 centigrade for one week. Store at -20 to -80 centigrade for twelve months from the date of receipt.
<b>Storage Buffer</b>	Supplied as solution form in PBS or lyophilized from PBS.
<b>Reconstitution</b>	Reconstitute in sterile water for a stock solution.

 Tel: 1-631-559-9269 1-516-512-3133

 Email: [info@creative-biomart.com](mailto:info@creative-biomart.com)  Fax: 1-631-938-8127

 45-1 Ramsey Road, Shirley, NY 11967, USA

**Shipping**

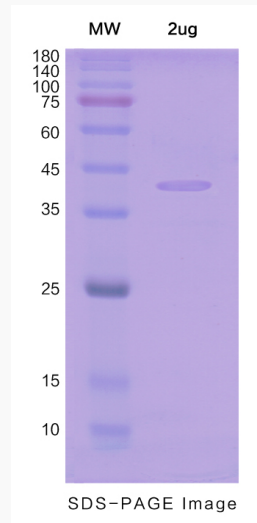
They are shipped out with dry ice/blue ice unless customers require otherwise.

**GENE INFORMATION**

<b>Gene Name</b>	TNFRSF11B tumor necrosis factor receptor superfamily, member 11b [ Homo sapiens (human) ]
<b>Official Symbol</b>	TNFRSF11B
<b>Synonyms</b>	TNFRSF11B; tumor necrosis factor receptor superfamily, member 11b; OPG, osteoprotegerin; tumor necrosis factor receptor superfamily member 11B; OCIF; TR1; osteoprotegerin; osteoclastogenesis inhibitory factor; OPG; MGC29565;
<b>Gene ID</b>	4982
<b>mRNA Refseq</b>	NM_002546
<b>Protein Refseq</b>	NP_002537
<b>MIM</b>	602643
<b>UniProt ID</b>	O00300

 Tel: 1-631-559-9269 1-516-512-3133 Email: [info@creative-biomart.com](mailto:info@creative-biomart.com)  Fax: 1-631-938-8127 45-1 Ramsey Road, Shirley, NY 11967, USA

**SDS-PAGE**



 Tel: 1-631-559-9269 1-516-512-3133

 Email: [info@creative-biomart.com](mailto:info@creative-biomart.com)  Fax: 1-631-938-8127

 45-1 Ramsey Road, Shirley, NY 11967, USA