

Recombinant Human TNFRSF12A protein, hFc-tagged

Cat. No. TNFRSF12A-785H Lot. No. (See product label)

SPECIFICATION

Product Overview	Recombinant Human TNFRSF12A protein(Q9NP84-1)(Glu28-Per80), fused with N-terminal hFc tag, was expressed in HEK293.
Species	Human
Source	HEK293
ProteinLength	Glu28-Per80
Tag	N-hFc
Form	Lyophilized from 0.22µm filtered solution in PBS (pH 7.4). Normally 8% trehalose is added as protectant before lyophilization.
Bio-activity	Immobilized Human TNFRSF12A, hFc Tag at 1ug/ml (100ul/Well) on the plate. Dose response curve for Biotinylated Anti-TNFRSF12A Antibody, hFc Tag with the EC50 of 30.8ng/ml determined by ELISA.
Molecular Mass	The protein has a predicted MW of 32.9 kDa. Due to glycosylation, the protein migrates to 38-45 kDa based on Tris-Bis PAGE result.
Endotoxin	Less than 1EU per µg by the LAL method.
Purity	> 95% as determined by Tris-Bis PAGE

 Tel: 1-631-559-9269 1-516-512-3133

 Email: info@creative-biomart.com  Fax: 1-631-938-8127

 45-1 Ramsey Road, Shirley, NY 11967, USA

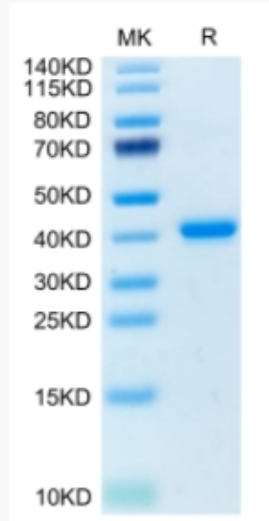
Storage	Reconstituted protein stable at -80°C for 12 months, 4°C for 1 week. Use a manual defrost freezer and avoid repeated freeze-thaw cycles.
Reconstitution	Centrifuge tubes before opening. Reconstituting to a concentration more than 100 µg/ml is recommended. Dissolve the lyophilized protein in distilled water.
GENE INFORMATION	
Gene Name	TNFRSF12A tumor necrosis factor receptor superfamily, member 12A [Homo sapiens]
Official Symbol	TNFRSF12A
Synonyms	TNFRSF12A; tumor necrosis factor receptor superfamily, member 12A; tumor necrosis factor receptor superfamily member 12A; CD266; FN14; TweakR; tweak-receptor; FGF-inducible 14; type I transmembrane protein Fn14; fibroblast growth factor-inducible immediate-early response protein 14; TWEAKR;
Gene ID	51330
mRNA Refseq	NM_016639
Protein Refseq	NP_057723
MIM	605914
UniProt ID	Q9NP84

 Tel: 1-631-559-9269 1-516-512-3133

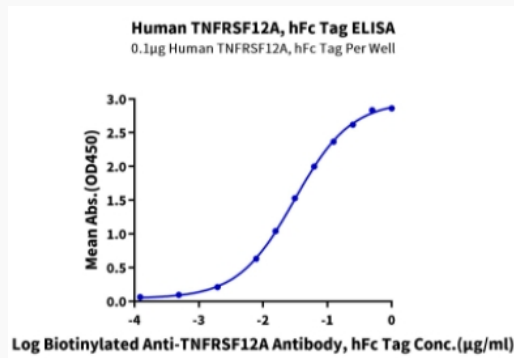
 Email: info@creative-biomart.com  Fax: 1-631-938-8127

 45-1 Ramsey Road, Shirley, NY 11967, USA

Tris-Bis PAGE



ELISA Data



 Tel: 1-631-559-9269 1-516-512-3133

 Email: info@creative-biomart.com  Fax: 1-631-938-8127

 45-1 Ramsey Road, Shirley, NY 11967, USA