

Recombinant Human TNFRSF13C protein, hFc-tagged

Cat. No. TNFRSF13C-120H Lot. No. (See product label)

SPECIFICATION

Product Overview	Recombinant Human TNFRSF13C protein(Q96RJ3-1)(Ser7-Ala71), fused with C-terminal hFc tag, was expressed in HEK293.
Species	Human
Source	HEK293
ProteinLength	Ser7-Ala71
Tag	C-hFc
Form	Lyophilized from 0.22µm filtered solution in PBS (pH 7.4). Normally 5% trehalose is added as protectant before lyophilization.
Bio-activity	Immobilized Human BAFF Trimer, His Tag at 2µg/ml (100µl/well). Dose response curve for Human BAFFR, hFc Tag with the EC50 of 56.9ng/ml determined by ELISA.
Molecular Mass	The protein has a predicted MW of 33.3 kDa. Due to glycosylation, the protein migrates to 40-48 kDa based on Tris-Bis PAGE result.
Endotoxin	Less than 1EU per µg by the LAL method.
Purity	> 95% as determined by Tris-Bis PAGE; > 95% as determined by HPLC
Storage	Reconstituted protein stable at -80°C for 12 months, 4°C for 1 week. Use a manual

 Tel: 1-631-559-9269 1-516-512-3133

 Email: info@creative-biomart.com  Fax: 1-631-938-8127

 45-1 Ramsey Road, Shirley, NY 11967, USA

defrost freezer and avoid repeated freeze-thaw cycles.

Reconstitution

Centrifuge tubes before opening. Reconstituting to a concentration more than 100 µg/ml is recommended. Dissolve the lyophilized protein in distilled water.

GENE INFORMATION

Gene Name

TNFRSF13C tumor necrosis factor receptor superfamily, member 13C [Homo sapiens]

Official Symbol

TNFRSF13C

Synonyms

TNFRSF13C; tumor necrosis factor receptor superfamily, member 13C; tumor necrosis factor receptor superfamily member 13C; BAFFR; CD268; BAFF receptor; BLyS receptor 3; B cell-activating factor receptor; B-cell-activating factor receptor; CVID4; BAFF-R; BROMIX; prolixin; MGC138235;

Gene ID

115650

mRNA Refseq

NM_052945

Protein Refseq

NP_443177

MIM

606269

UniProt ID

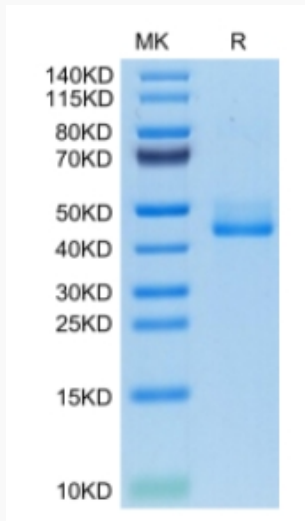
Q96RJ3

 Tel: 1-631-559-9269 1-516-512-3133

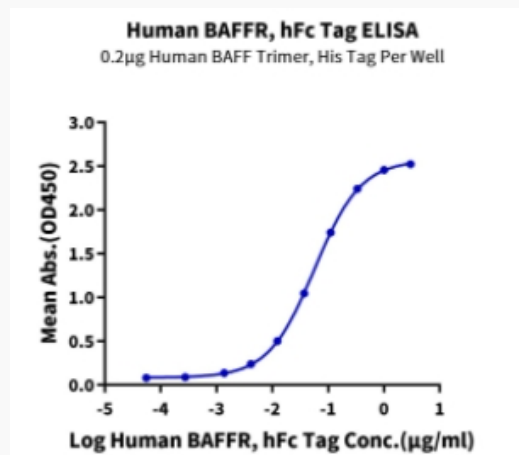
 Email: info@creative-biomart.com  Fax: 1-631-938-8127

 45-1 Ramsey Road, Shirley, NY 11967, USA

Tris-Bis PAGE



ELISA Data



 Tel: 1-631-559-9269 1-516-512-3133

 Email: info@creative-biomart.com  Fax: 1-631-938-8127

 45-1 Ramsey Road, Shirley, NY 11967, USA