

# Recombinant Human TNFRSF14 Protein (Met1-Val202), C-His tagged

Cat. No. TNFRSF14-1190H Lot. No. (See product label)

## SPECIFICATION

<b>Product Overview</b>	Recombinant human TNFRSF14 (Met1-Val202) fused with the C-terminal His tag was expressed in Mammalian cells.
<b>Species</b>	Human
<b>Source</b>	Mammalian Cells
<b>ProteinLength</b>	Met1-Val202
<b>Form</b>	Lyophilized powder/frozen liquid
<b>Molecular Mass</b>	22.46 kDa
<b>Purity</b>	>90% as determined by SDS-PAGE.
<b>Notes</b>	For research use only.
<b>Storage</b>	Use a manual defrost freezer and avoid repeated freeze thaw cycles. Store at 2 to 8 centigrade for one week. Store at -20 to -80 centigrade for twelve months from the date of receipt.
<b>Storage Buffer</b>	Supplied as solution form in PBS pH 7.5 or lyophilized from PBS pH 7.5.
<b>Reconstitution</b>	Reconstitute in sterile water for a stock solution.

 Tel: 1-631-559-9269 1-516-512-3133

 Email: [info@creative-biomart.com](mailto:info@creative-biomart.com)  Fax: 1-631-938-8127

 45-1 Ramsey Road, Shirley, NY 11967, USA

**Shipping**

They are shipped out with dry ice/blue ice unless customers require otherwise.

**GENE INFORMATION**
**Gene Name**

TNFRSF14 tumor necrosis factor receptor superfamily, member 14 [ Homo sapiens (human) ]

**Official Symbol**

TNFRSF14

**Synonyms**

TNFRSF14; tumor necrosis factor receptor superfamily, member 14; tumor necrosis factor receptor superfamily, member 14 (herpesvirus entry mediator); tumor necrosis factor receptor superfamily member 14; ATAR; CD270; herpesvirus entry mediator; HVEA; HVEM; LIGHTR; TR2; CD40-like protein; herpesvirus entry mediator A; herpes virus entry mediator A; tumor necrosis factor receptor-like 2; tumor necrosis factor receptor-like gene2;

**Gene ID**

8764

**mRNA Refseq**

NM\_003820

**Protein Refseq**

NP\_003811

**MIM**

602746

**UniProt ID**

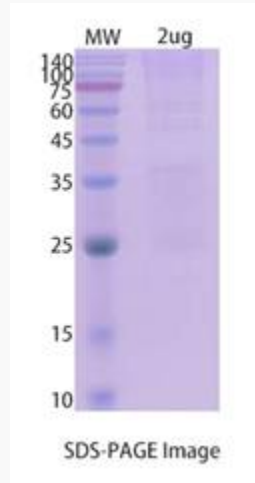
Q92956

 Tel: 1-631-559-9269 1-516-512-3133

 Email: [info@creative-biomart.com](mailto:info@creative-biomart.com)  Fax: 1-631-938-8127

 45-1 Ramsey Road, Shirley, NY 11967, USA

**SDS-PAGE**



 Tel: 1-631-559-9269 1-516-512-3133

 Email: [info@creative-biomart.com](mailto:info@creative-biomart.com)  Fax: 1-631-938-8127

 45-1 Ramsey Road, Shirley, NY 11967, USA