

Active Recombinant Human TNFRSF14 protein, hFc&His-tagged

Cat. No. TNFRSF14-2611H **Lot. No.** (See product label)

SPECIFICATION

Product Overview	Recombinant Human TNFRSF14/HVEM/CD270 Protein is produced by HEK293 expression system. The target protein is expressed with sequence (Leu 39 - Val 202) of human HVEM (Accession #NP_003811.2) fused with an Fc, 6xHis tag at the C-terminus.
Species	Human
Source	HEK293
ProteinLength	Leu 39 - Val 202
Form	Lyophilized from a 0.22 µm filtered solution of PBS, pH 7.4.
Bio-activity	Measured by its binding ability in a functional ELISA. Immobilized Recombinant human HVEM at 5 µg/mL (100 µL/well) can bind Biotinylated Recombinant human BTLA with a linear range of 1.5-6 µg/mL.
Molecular Mass	55-66 kDa
Endotoxin	< 0.1 EU/µg of the protein by LAL method.
Purity	> 97% by SDS-PAGE.
Storage	Store the lyophilized protein at -20°C to -80 °C for long term.

 Tel: 1-631-559-9269 1-516-512-3133

 Email: info@creative-biomart.com  Fax: 1-631-938-8127

 45-1 Ramsey Road, Shirley, NY 11967, USA

After reconstitution, the protein solution is stable at -20 °C for 3 months, at 2-8 °C for up to 1 week.

Reconstitution Reconstitute to a concentration of 0.1-0.5 mg/mL in sterile distilled water.

GENE INFORMATION

Gene Name TNFRSF14 tumor necrosis factor receptor superfamily, member 14 [Homo sapiens]

Official Symbol TNFRSF14

Synonyms

TNFRSF14; tumor necrosis factor receptor superfamily, member 14; tumor necrosis factor receptor superfamily, member 14 (herpesvirus entry mediator); tumor necrosis factor receptor superfamily member 14; ATAR; CD270; herpesvirus entry mediator; HVEA; HVEM; LIGHTR; TR2; CD40-like protein; herpesvirus entry mediator A; herpes virus entry mediator A; tumor necrosis factor receptor-like 2; tumor necrosis factor receptor-like gene2;

Gene ID 8764

mRNA Refseq NM_003820

Protein Refseq NP_003811

MIM 602746

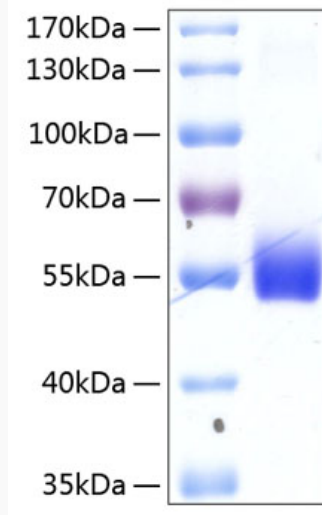
UniProt ID Q92956

 Tel: 1-631-559-9269 1-516-512-3133

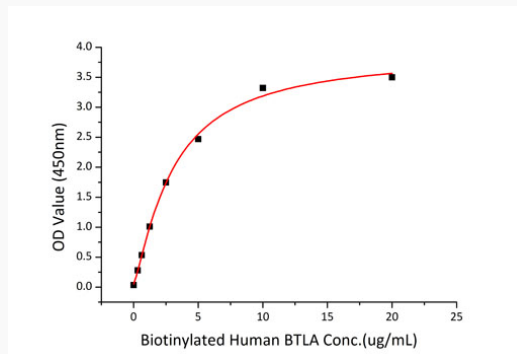
 Email: info@creative-biomart.com  Fax: 1-631-938-8127

 45-1 Ramsey Road, Shirley, NY 11967, USA

SDS-PAGE



Bio-activity



 Tel: 1-631-559-9269 1-516-512-3133

 Email: info@creative-biomart.com  Fax: 1-631-938-8127

 45-1 Ramsey Road, Shirley, NY 11967, USA