

## Recombinant Human TNFRSF14 protein, Fc-tagged

Cat. No. TNFRSF14-373H Lot. No. (See product label)

### SPECIFICATION

<b>Product Overview</b>	Recombinant Human TNFRSF14 protein (Leu39-Val202), fused to human IgG1 Fc tag at C-terminus, was expressed in human 293 cells (HEK293).
<b>Species</b>	Human
<b>Source</b>	HEK293
<b>ProteinLength</b>	164
<b>Description</b>	<p>Herpesvirus entry mediator (HVEM) is also known as TNFRSF14, TR2 (TNF receptorlike molecule) and ATAR (another TRAF associated receptor), is a type I membrane protein belonging to the TNF/NGF receptor superfamily. HVEM expression has been detected in peripheral blood T cells, B cells, monocytes and in various tissues enriched in lymphoid cells. The extracellular domain of HVEM has been shown to interact directly with the herpes simplex virus envelope glycoprotein D (gD).</p> <p>Two TNF superfamily ligands, including the secreted TNF<math>\beta</math> (lymphotoxin <math>\alpha</math>) and the membrane protein LIGHT (lymphotoxins, exhibits inducible expression, and competes with HSV glycoprotein D for HVEM, a receptor expressed by T lymphocytes), have been shown to be the cellular ligands for HVEM. Besides HVEM, LIGHT can also interact with LT<math>\beta</math>R, the receptor for lymphotoxin <math>\alpha\beta</math> heterotrimer. The role of the HVEM LIGHT /LT<math>\beta</math> receptor ligand pair in immune function and herpesvirus pathobiology remains to be elucidated.</p>
<b>Form</b>	Lyophilized from 0.22 um filtered solution in Tris with Glycine, Arginine and NaCl,

 Tel: 1-631-559-9269 1-516-512-3133

 Email: [info@creative-biomart.com](mailto:info@creative-biomart.com)  Fax: 1-631-938-8127

 45-1 Ramsey Road, Shirley, NY 11967, USA

	pH7.5, 10% trehalose.
<b>Molecular Mass</b>	The protein has a calculated MW of 45.4 kDa. The protein migrates as 55-66 kDa under reducing (R) condition (SDS-PAGE) due to glycosylation.
<b>Endotoxin</b>	Less than 1.0 EU per ug by the LAL method.
<b>Purity</b>	>95% as determined by SDS-PAGE.
<b>Storage</b>	For long term storage, the product should be stored at lyophilized state at -20 centigrade or lower. Please avoid repeated freeze-thaw cycles. This product is stable after storage at: -20 centigrade to -70 centigrade for 12 months in lyophilized state; -70 centigrade for 3 months under sterile conditions after reconstitution.
<b>Reconstitution</b>	It is recommended that sterile water be added to the vial to prepare a stock solution of 0.2 ug/ul. Centrifuge the vial at 4°C before opening to recover the entire contents.

## GENE INFORMATION

<b>Gene Name</b>	TNFRSF14
<b>Official Symbol</b>	TNFRSF14
<b>Synonyms</b>	TNFRSF14; tumor necrosis factor receptor superfamily, member 14; tumor necrosis factor receptor superfamily, member 14 (herpesvirus entry mediator); tumor necrosis factor receptor superfamily member 14; ATAR; CD270; herpesvirus entry mediator; HVEA; HVEM; LIGHTR; TR2; CD40-like protein; herpesvirus entry mediator A; herpes virus entry mediator A; tumor necrosis factor receptor-like 2; tumor necrosis factor receptor-like gene2

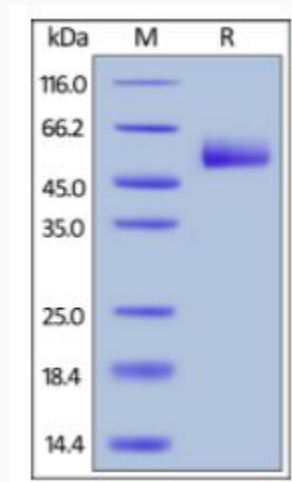
 Tel: 1-631-559-9269 1-516-512-3133

 Email: [info@creative-biomart.com](mailto:info@creative-biomart.com)  Fax: 1-631-938-8127

 45-1 Ramsey Road, Shirley, NY 11967, USA

<b>Gene ID</b>	8764
<b>mRNA Refseq</b>	NM_003820
<b>Protein Refseq</b>	NP_003811
<b>MIM</b>	602746
<b>UniProt ID</b>	Q92956

**SDS-PAGE of  
TNFRSF14-373H**



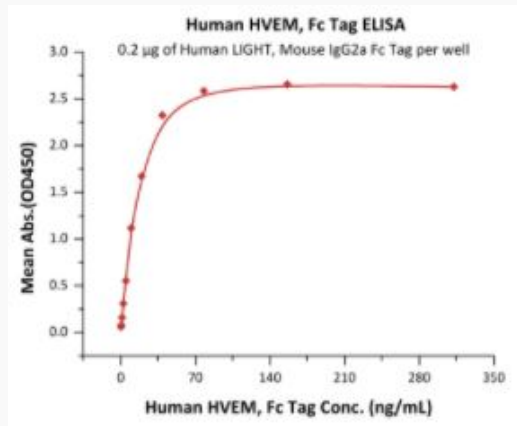
Human HVEM, Fc Tag on SDS-PAGE under reducing (R) condition. The gel was stained overnight with Coomassie Blue. The purity of the protein is greater than 95%.

 Tel: 1-631-559-9269 1-516-512-3133

 Email: [info@creative-biomart.com](mailto:info@creative-biomart.com)  Fax: 1-631-938-8127

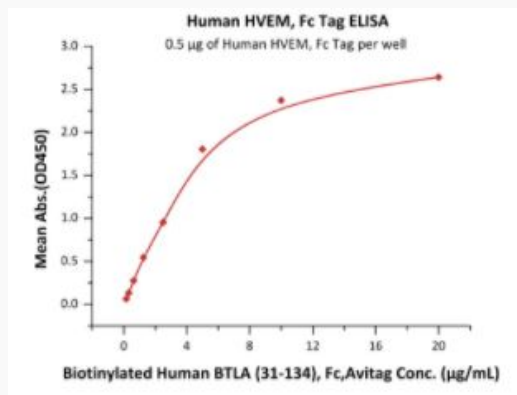
 45-1 Ramsey Road, Shirley, NY 11967, USA

**Bioactivity-ELISA of  
TNFRSF14-373H**



Immobilized Human LIGHT, Mouse IgG2a Fc Tag, low endotoxin at 2 µg/mL (100 µL/well) can bind Human HVEM, Fc Tag with a linear range of 0.3-20 ng/mL (QC tested).

**Bioactivity-ELISA of  
TNFRSF14-373H**



Immobilized Human HVEM, Fc Tag at 5 µg/mL (100 µL/well) can bind Biotinylated Human BTLA (31-134), Fc,Avitag with a linear range of 0.156-5 µg/mL (Routinely tested).

Tel: 1-631-559-9269 1-516-512-3133

Email: [info@creative-biomart.com](mailto:info@creative-biomart.com) Fax: 1-631-938-8127

45-1 Ramsey Road, Shirley, NY 11967, USA