

Recombinant Human TNFRSF14 protein, His-tagged

Cat. No. TNFRSF14-555H Lot. No. (See product label)

SPECIFICATION

Product Overview	Recombinant Human TNFRSF14 protein(Q92956-1)(Leu39-Val202), fused with C-terminal His tag, was expressed in HEK293.
Species	Human
Source	HEK293
ProteinLength	Leu39-Val202
Tag	C-His
Form	Lyophilized from 0.22µm filtered solution in PBS (pH 7.4). Normally 8% trehalose is added as protectant before lyophilization.
Bio-activity	Immobilized Human HVEM, His Tag at 2 µg/ml (100 µl/Well) on the plate. Dose response curve for Human CD160, hFc Tag with the EC50 of 0.17 µg/ml determined by ELISA.
Molecular Mass	The protein has a predicted MW of 18.5 kDa. Due to glycosylation, the protein migrates to 32-48 kDa based on Tris-Bis PAGE result.
Endotoxin	Less than 1EU per µg by the LAL method.
Purity	> 95% as determined by Tris-Bis PAGE; > 95% as determined by HPLC

 Tel: 1-631-559-9269 1-516-512-3133

 Email: info@creative-biomart.com  Fax: 1-631-938-8127

 45-1 Ramsey Road, Shirley, NY 11967, USA

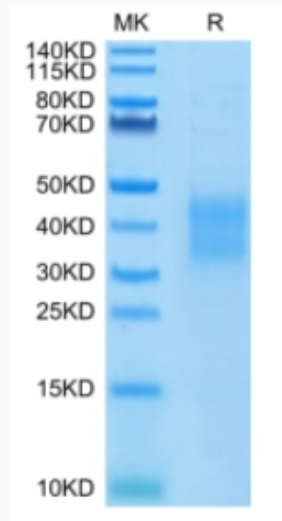
Storage	Reconstituted protein stable at -80°C for 12 months, 4°C for 1 week. Use a manual defrost freezer and avoid repeated freeze-thaw cycles.
Reconstitution	Centrifuge tubes before opening. Reconstituting to a concentration more than 100 µg/ml is recommended. Dissolve the lyophilized protein in distilled water.
GENE INFORMATION	
Gene Name	TNFRSF14 tumor necrosis factor receptor superfamily, member 14 [Homo sapiens]
Official Symbol	TNFRSF14
Synonyms	TNFRSF14; tumor necrosis factor receptor superfamily, member 14; tumor necrosis factor receptor superfamily, member 14 (herpesvirus entry mediator); tumor necrosis factor receptor superfamily member 14; ATAR; CD270; herpesvirus entry mediator; HVEA; HVEM; LIGHTR; TR2; CD40-like protein; herpesvirus entry mediator A; herpes virus entry mediator A; tumor necrosis factor receptor-like 2; tumor necrosis factor receptor-like gene2;
Gene ID	8764
mRNA Refseq	NM_003820
Protein Refseq	NP_003811
MIM	602746
UniProt ID	Q92956

 Tel: 1-631-559-9269 1-516-512-3133

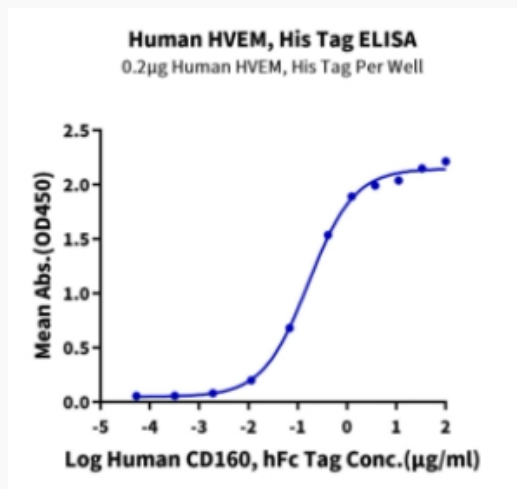
 Email: info@creative-biomart.com  Fax: 1-631-938-8127

 45-1 Ramsey Road, Shirley, NY 11967, USA

Tris-Bis PAGE



ELISA Data



 Tel: 1-631-559-9269 1-516-512-3133

 Email: info@creative-biomart.com  Fax: 1-631-938-8127

 45-1 Ramsey Road, Shirley, NY 11967, USA