

Recombinant Human TNFRSF18 protein, His-tagged

Cat. No. TNFRSF18-329H Lot. No. (See product label)

SPECIFICATION

Product Overview	Recombinant Human TNFRSF18 protein(Q9Y5U5-1)(Gln26-Glu161), fused with C-terminal His tag, was expressed in HEK293.
Species	Human
Source	HEK293
ProteinLength	Gln26-Glu161
Tag	C-His
Form	Lyophilized from 0.22µm filtered solution in PBS (pH 7.4). Normally 8% trehalose is added as protectant before lyophilization.
Bio-activity	Immobilized Human GITR Ligand Trimer, hFc Tag at 5µg/ml (100µl/well) on the plate. Dose response curve for Human GITR, His Tag with the EC50 of 2.60µg/ml determined by ELISA.
Molecular Mass	The protein has a predicted MW of 15.4 kDa. Due to glycosylation, the protein migrates to 25-28 kDa based on Tris-Bis PAGE result.
Endotoxin	Less than 1EU per µg by the LAL method.
Purity	> 95% as determined by Tris-Bis PAGE; > 95% as determined by HPLC

 Tel: 1-631-559-9269 1-516-512-3133

 Email: info@creative-biomart.com  Fax: 1-631-938-8127

 45-1 Ramsey Road, Shirley, NY 11967, USA

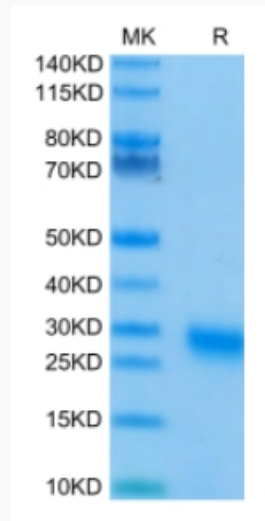
Storage	Reconstituted protein stable at -80°C for 12 months, 4°C for 1 week. Use a manual defrost freezer and avoid repeated freeze-thaw cycles.
Reconstitution	Centrifuge tubes before opening. Reconstituting to a concentration more than 100 µg/ml is recommended. Dissolve the lyophilized protein in distilled water.
GENE INFORMATION	
Gene Name	TNFRSF18 tumor necrosis factor receptor superfamily, member 18 [Homo sapiens]
Official Symbol	TNFRSF18
Synonyms	TNFRSF18; tumor necrosis factor receptor superfamily, member 18; tumor necrosis factor receptor superfamily member 18; AITR; CD357; GITR; activation-inducible TNFR family receptor; glucocorticoid-induced TNFR-related protein; TNF receptor superfamily activation-inducible protein; GITR-D;
Gene ID	8784
mRNA Refseq	NM_004195
Protein Refseq	NP_004186
MIM	603905
UniProt ID	Q9Y5U5

 Tel: 1-631-559-9269 1-516-512-3133

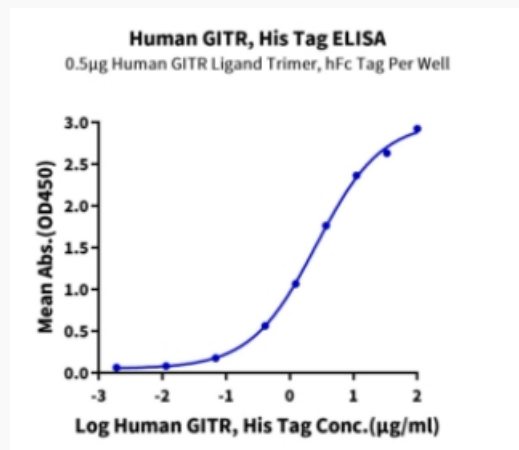
 Email: info@creative-biomart.com  Fax: 1-631-938-8127

 45-1 Ramsey Road, Shirley, NY 11967, USA

Tris-Bis PAGE



ELISA Data



 Tel: 1-631-559-9269 1-516-512-3133

 Email: info@creative-biomart.com  Fax: 1-631-938-8127

 45-1 Ramsey Road, Shirley, NY 11967, USA