

Recombinant Human TNFRSF1A protein, His-tagged

Cat. No. TNFRSF1A-4634H Lot. No. (See product label)

SPECIFICATION

Product Overview	Recombinant Human TNFRSF1A protein(P19438-1)(Leu30-Thr211), fused with C-terminal His tag, was expressed in HEK293.
Species	Human
Source	HEK293
ProteinLength	Leu30-Thr211
Tag	C-His
Form	Lyophilized from 0.22µm filtered solution in PBS (pH 7.4). Normally 5% trehalose is added as protectant before lyophilization.
Bio-activity	Immobilized Human TNFR1, His Tag at 0.5µg/ml (100µl/Well). Dose response curve for Biotinylated Human TNF alpha, His Tag with the EC50 of 16.5ng/ml determined by ELISA.
Molecular Mass	The protein has a predicted MW of 23.3 kDa. Due to glycosylation, the protein migrates to 38-48 kDa based on Tris-Bis PAGE result.
Endotoxin	Less than 1EU per µg by the LAL method.
Purity	> 95% as determined by Tris-Bis PAGE; > 95% as determined by HPLC

 Tel: 1-631-559-9269 1-516-512-3133

 Email: info@creative-biomart.com  Fax: 1-631-938-8127

 45-1 Ramsey Road, Shirley, NY 11967, USA

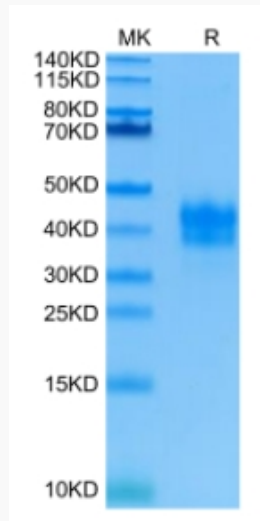
Storage	Reconstituted protein stable at -80°C for 12 months, 4°C for 1 week. Use a manual defrost freezer and avoid repeated freeze-thaw cycles.
Reconstitution	Centrifuge tubes before opening. Reconstituting to a concentration more than 100 µg/ml is recommended. Dissolve the lyophilized protein in distilled water.
GENE INFORMATION	
Gene Name	TNFRSF1A tumor necrosis factor receptor superfamily, member 1A [Homo sapiens]
Official Symbol	TNFRSF1A
Synonyms	TNFRSF1A; tumor necrosis factor receptor superfamily, member 1A; TNFR1; tumor necrosis factor receptor superfamily member 1A; CD120a; TNF R; TNF R I; TNF R55; TNFAR; TNFR60; TNF-R1; TNF-RI; TNFR-I; tumor necrosis factor-alpha receptor; tumor necrosis factor receptor type 1; tumor necrosis factor binding protein 1; tumor necrosis factor receptor 1A isoform beta; FPF; p55; p60; TBP1; TNF-R; p55-R; TNFR55; TNF-R-I; TNF-R55; MGC19588;
Gene ID	7132
mRNA Refseq	NM_001065
Protein Refseq	NP_001056
MIM	191190
UniProt ID	P19438

 Tel: 1-631-559-9269 1-516-512-3133

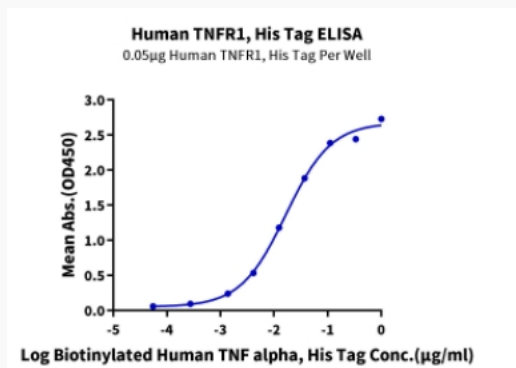
 Email: info@creative-biomart.com  Fax: 1-631-938-8127

 45-1 Ramsey Road, Shirley, NY 11967, USA

Tris-Bis PAGE



ELISA Data



 Tel: 1-631-559-9269 1-516-512-3133

 Email: info@creative-biomart.com  Fax: 1-631-938-8127

 45-1 Ramsey Road, Shirley, NY 11967, USA