

Recombinant Human TNFRSF1B Protein (Met1-Asp257), C-His tagged

Cat. No. TNFRSF1B-5142H Lot. No. (See product label)

SPECIFICATION

Product Overview	Recombinant human TNFRSF1B (Met1-Asp257) fused with the C-terminal His tag was expressed in Mammalian cells.
Species	Human
Source	Mammalian Cells
ProteinLength	Met1-Asp257
Form	Lyophilized powder/frozen liquid
Molecular Mass	28.38 kDa
Endotoxin	< 1.0 EU/μg of the protein as determined by the LAL method.
Purity	>90% as determined by SDS-PAGE.
Notes	For research use only.
Storage	Use a manual defrost freezer and avoid repeated freeze thaw cycles. Store at 2 to 8 centigrade for one week. Store at -20 to -80 centigrade for twelve months from the date of receipt.
Storage Buffer	Supplied as solution form in PBS or lyophilized from PBS.

 Tel: 1-631-559-9269 1-516-512-3133

 Email: info@creative-biomart.com  Fax: 1-631-938-8127

 45-1 Ramsey Road, Shirley, NY 11967, USA

Reconstitution Reconstitute in sterile water for a stock solution.

Shipping They are shipped out with dry ice/blue ice unless customers require otherwise.

GENE INFORMATION

Gene Name TNFRSF1B tumor necrosis factor receptor superfamily, member 1B [Homo sapiens (human)]

Official Symbol TNFRSF1B

Synonyms TNFRSF1B; tumor necrosis factor receptor superfamily, member 1B; TNFR2; tumor necrosis factor receptor superfamily member 1B; CD120b; p75; TNF R II; TNF R75; TNFBR; TNFR80; TNF-R2; TNF-RII; p75 TNF receptor; p80 TNF-alpha receptor; soluble TNFR1B variant 1; tumor necrosis factor receptor 2; tumor necrosis factor beta receptor; tumor necrosis factor receptor type II; tumor necrosis factor binding protein 2; TBPII; TNFR1B; TNF-R75; p75TNFR; TNF-R-II;

Gene ID 7133

mRNA Refseq NM_001066

Protein Refseq NP_001057

MIM 191191

UniProt ID P20333

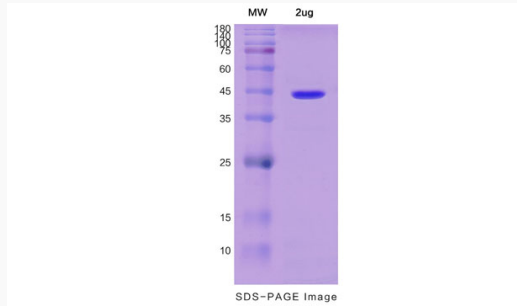
 Tel: 1-631-559-9269 1-516-512-3133

 Email: info@creative-biomart.com  Fax: 1-631-938-8127

 45-1 Ramsey Road, Shirley, NY 11967, USA



SDS-PAGE



Tel: 1-631-559-9269 1-516-512-3133

Email: info@creative-biomart.com Fax: 1-631-938-8127

45-1 Ramsey Road, Shirley, NY 11967, USA