

Recombinant Mouse TNFRSF25 protein, His-tagged

Cat. No. TNFRSF25-1620M Lot. No. (See product label)

SPECIFICATION

Product Overview	Recombinant Mouse TNFRSF25 protein(B1AWN9)(Gln31-Met196), fused with C-terminal His tag, was expressed in HEK293.
Species	Mouse
Source	C-His
ProteinLength	Gln31-Met196
Tag	C-His
Form	Lyophilized from 0.22µm filtered solution in PBS (pH 7.4). Normally 8% trehalose is added as protectant before lyophilization.
Bio-activity	Immobilized Mouse DR3, His Tag at 1µg/ml (100 µl/well) on the plate. Dose response curve for Biotinylated Mouse TNFSF15, His Tag with the EC50 of 8.8 ng/ml determined by ELISA.
Molecular Mass	The protein has a predicted MW of 18.79 kDa. Due to glycosylation, the protein migrates to 38-48 kDa based on Tris-Bis PAGE result.
Endotoxin	Less than 1EU per µg by the LAL method.
Purity	> 95% as determined by Tris-Bis PAGE; > 95% as determined by HPLC.

 Tel: 1-631-559-9269 1-516-512-3133

 Email: info@creative-biomart.com  Fax: 1-631-938-8127

 45-1 Ramsey Road, Shirley, NY 11967, USA

Storage Reconstituted protein stable at -80°C for 12 months, 4°C for 1 week. Use a manual defrost freezer and avoid repeated freeze-thaw cycles.

Reconstitution Centrifuge tubes before opening. Reconstituting to a concentration more than 100 µg/ml is recommended. Dissolve the lyophilized protein in distilled water.

GENE INFORMATION

Gene Name [Tnfrsf25 tumor necrosis factor receptor superfamily, member 25 \[Mus musculus \]](#)

Official Symbol [TNFRSF25](#)

Synonyms TNFRSF25; tumor necrosis factor receptor superfamily, member 25; tumor necrosis factor receptor superfamily member 25; tumor necrosis factor receptor superfamily, member 12; DR3; TR3; Wsl; DDR3; LARD; APO-3; TRAMP; WSL-1; WSL-LR; Tnfrsf12;

Gene ID [85030](#)

mRNA Refseq [NM_033042](#)

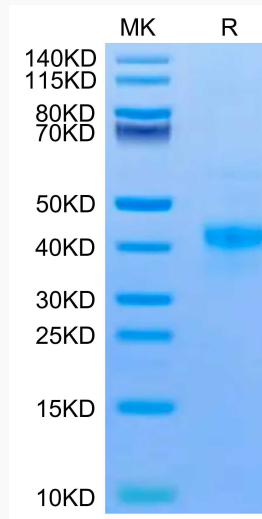
Protein Refseq [NP_149031](#)

 Tel: 1-631-559-9269 1-516-512-3133

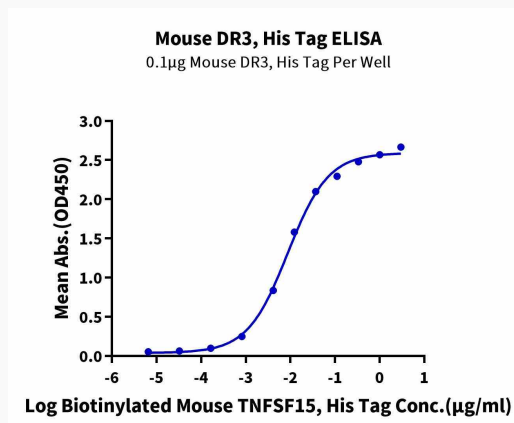
 Email: info@creative-biomart.com  Fax: 1-631-938-8127

 45-1 Ramsey Road, Shirley, NY 11967, USA

Tris-Bis PAGE



ELISA



Tel: 1-631-559-9269 1-516-512-3133

Email: info@creative-biomart.com Fax: 1-631-938-8127

45-1 Ramsey Road, Shirley, NY 11967, USA