

# Active Recombinant Human TNFRSF8 protein, Fc/Avi-tagged, Biotinylated

**Cat. No.** TNFRSF8-052H    **Lot. No.** (See product label)

## SPECIFICATION

### Product Overview

Biotinylated Recombinant Human TNFRSF8(Phe19-Lys379) protein, fused to Fc/Avi tag at the C-terminus, was expressed in HEK293 cells .

### Species

Human

### Source

HEK293

### ProteinLength

Phe19-Lys379

### Description

CD30, also known as Ki-1 antigen and TNFRSF8, is a 120 kDa type I transmembrane glycoprotein belonging to the TNF receptor superfamily (1, 2). Mature human CD30 consists of a 361 amino acid (aa) extracellular domain (ECD) with six cysteine-rich repeats, a 28 aa transmembrane segment, and a 188 aa cytoplasmic domain (3). In contrast, mouse and rat CD30 lack 90 aa of the ECD and contain only three cysteine-rich repeats. Within common regions of the ECD, human CD30 shares 53% and 49% aa sequence identity with mouse and rat CD30, respectively. Alternate splicing of human CD30 generates an isoform that includes only the C-terminal 132 aa of the cytoplasmic domain. CD30 is normally expressed on antigen-stimulated Th cells and B cells (4-6). However, it is up-regulated in Hodgkin's disease (on Reed-Sternberg cells), other lymphomas, chronic inflammation, and autoimmunity (7). CD30 binds to CD30 Ligand/TNFSF8 which is expressed on activated Th cells, monocytes, granulocytes and medullary thymic epithelial cells (1, 5). CD30 signaling co-stimulates antigen-induced Th0 and Th2 proliferation and cytokine

 Tel: 1-631-559-9269    1-516-512-3133

 Email: [info@creative-biomart.com](mailto:info@creative-biomart.com)     Fax: 1-631-938-8127

 45-1 Ramsey Road, Shirley, NY 11967, USA

secretion but favors a Th2-biased immune response (8). In the absence of antigenic stimulation, it can still induce T cell expression of IL-13 (9). CD30 contributes to thymic negative selection by inducing the apoptotic cell death of CD4+CD8+ T cells (10, 11). In B cells, CD30 ligation promotes cellular proliferation and antibody production in addition to the expression of CXCR4, CCL3, and CCL5 (5, 12). An 85-90 kDa soluble form of CD30 is shed from the cell surface by TACE-mediated cleavage (13, 14). Soluble CD30 retains the ability to bind CD30 Ligand and functions as an inhibitor of normal CD30 signaling (15).

<b>Predicted N Terminal</b>	Phe19
<b>Form</b>	Lyophilized from a 0.2 µm filtered solution in PBS with Trehalose.
<b>Bio-activity</b>	Measured by its binding ability in a functional ELISA. When Recombinant Human TNFSF8 is immobilized at 0.25 µg/mL (100 µL/well), the concentration of Biotinylated Recombinant Human TNFRSF8 Fc Chimera Avi-tag that produces 50% of the optimal binding response is 3-15 ng/mL.
<b>Molecular Mass</b>	107-127 kDa, under reducing conditions
<b>Endotoxin</b>	<0.10 EU per 1 µg of the protein by the LAL method.
<b>Purity</b>	>95%, by SDS-PAGE visualized with Silver Staining and quantitative densitometry by Coomassie® Blue Staining.
<b>Applications</b>	Bioactivity
<b>Storage</b>	Use a manual defrost freezer and avoid repeated freeze-thaw cycles. 12 months from date of receipt, -20 to -70 °C as supplied. 1 month, 2 to 8 °C under sterile conditions after reconstitution. 3 months, -20 to -70 °C under sterile conditions after

 Tel: 1-631-559-9269 1-516-512-3133

 Email: [info@creative-biomart.com](mailto:info@creative-biomart.com)  Fax: 1-631-938-8127

 45-1 Ramsey Road, Shirley, NY 11967, USA

reconstitution.

**Reconstitution** Reconstitute at 500 µg/mL in PBS.

**Conjugation** Biotin

## GENE INFORMATION

**Gene Name** TNFRSF8 tumor necrosis factor receptor superfamily, member 8 [ Homo sapiens ]

**Official Symbol** TNFRSF8

**Synonyms**

TNFRSF8; tumor necrosis factor receptor superfamily, member 8; CD30, D1S166E; tumor necrosis factor receptor superfamily member 8; KI 1; Ki-1 antigen; CD30L receptor; cytokine receptor CD30; lymphocyte activation antigen CD30; CD30; Ki-1; D1S166E;

**Gene ID** 943

**mRNA Refseq** NM\_001243

**Protein Refseq** NP\_001234

**MIM** 153243

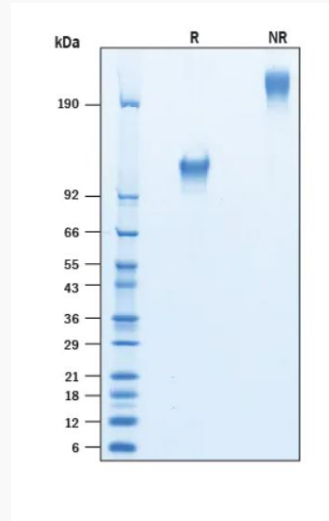
**UniProt ID** P28908

 Tel: 1-631-559-9269 1-516-512-3133

 Email: [info@creative-biomart.com](mailto:info@creative-biomart.com)  Fax: 1-631-938-8127

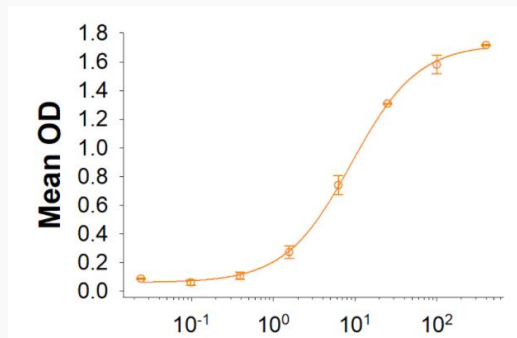
 45-1 Ramsey Road, Shirley, NY 11967, USA

**SDS-PAGE**



2 µg/lane Protein was resolved with SDS-PAGE under reducing (R) and non-reducing (NR) conditions and visualized by Coomassie® Blue staining.

**Binding Activity**



Tel: 1-631-559-9269 1-516-512-3133

Email: [info@creative-biomart.com](mailto:info@creative-biomart.com) Fax: 1-631-938-8127

45-1 Ramsey Road, Shirley, NY 11967, USA