

Active Recombinant Human TNFRSF8 protein, His-tagged

Cat. No. TNFRSF8-2637H Lot. No. (See product label)

SPECIFICATION

Product Overview	Active Recombinant Human TNFRSF8/CD30 Protein is produced by HEK293 cells expression system. The target protein is expressed with sequence (Phe19-Lys379) of human CD30/TNFRSF8 (Accession #NP_001234.2) fused with a 6xHis tag at the C-terminus.
Species	Human
Source	HEK293
ProteinLength	Phe19-Lys379
Form	Lyophilized from a 0.22 µm filtered solution of PBS, pH 7.4.
Bio-activity	Measured by its binding ability in a functional ELISA. Immobilized recombinant Human CD30/TNFRSF8 at 2 µg/mL (100 µL/well) can bind recombinant Human CD30L with a linear range of 1.22-15.23 ng/mL.
Molecular Mass	65-85 kDa
Endotoxin	< 0.1 EU/µg of the protein by LAL method.
Purity	> 97% by SDS-PAGE.
Storage	Store the lyophilized protein at -20°C to -80 °C for long term. After reconstitution, the protein solution is stable at -20 °C for 3 months, at 2-8 °C for

 Tel: 1-631-559-9269 1-516-512-3133

 Email: info@creative-biomart.com  Fax: 1-631-938-8127

 45-1 Ramsey Road, Shirley, NY 11967, USA

up to 1 week.

Reconstitution Reconstitute to a concentration of 0.1-0.5 mg/mL in sterile distilled water.

GENE INFORMATION

Gene Name TNFRSF8 tumor necrosis factor receptor superfamily, member 8 [Homo sapiens]

Official Symbol TNFRSF8

Synonyms TNFRSF8; tumor necrosis factor receptor superfamily, member 8; CD30, D1S166E; tumor necrosis factor receptor superfamily member 8; KI 1; Ki-1 antigen; CD30L receptor; cytokine receptor CD30; lymphocyte activation antigen CD30; CD30; Ki-1; D1S166E;

Gene ID 943

mRNA Refseq NM_001243

Protein Refseq NP_001234

MIM 153243

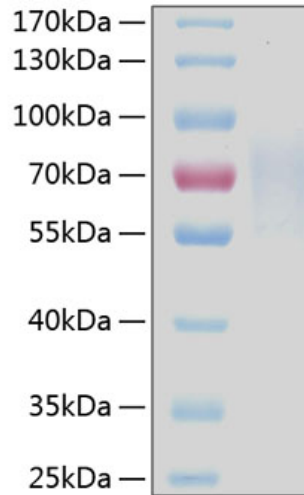
UniProt ID P28908

 Tel: 1-631-559-9269 1-516-512-3133

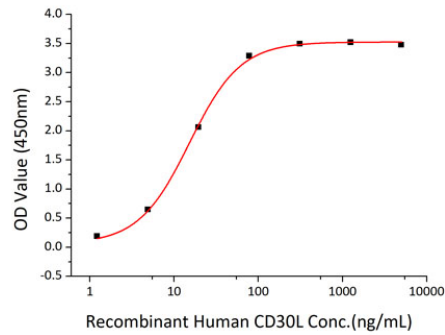
 Email: info@creative-biomart.com  Fax: 1-631-938-8127

 45-1 Ramsey Road, Shirley, NY 11967, USA

SDS-PAGE



Bio-activity



 Tel: 1-631-559-9269 1-516-512-3133

 Email: info@creative-biomart.com  Fax: 1-631-938-8127

 45-1 Ramsey Road, Shirley, NY 11967, USA