

## Active Recombinant Human TNFRSF8 Protein, LlgG2b Fc-tagged, low endotoxin

Cat. No. TNFRSF8-373H Lot. No. (See product label)

### SPECIFICATION

<b>Product Overview</b>	Recombinant Human TNFRSF8 Protein, LlgG2b Fc-tagged, low endotoxin is expressed from human 293 cells (HEK293). It contains AA Phe 19 - Lys 379 (Accession # NP_001234.2). Predicted N-terminus: Phe 19. This protein carries a llama IgG2b Fc tag at the C-terminus. The protein has a calculated MW of 66.3 kDa. The protein migrates as 95-120 kDa under reducing (R) condition (SDS-PAGE) due to glycosylation.
<b>Species</b>	Human
<b>Source</b>	HEK293
<b>ProteinLength</b>	Phe 19 - Lys 379
<b>Form</b>	Lyophilized from 0.22 µm filtered solution in 50 mM Tris, 100 mM Glycine, pH7.5. Normally trehalose is added as protectant before lyophilization.
<b>Bio-activity</b>	Immobilized Recombinant Human TNFRSF8 Protein, LlgG2b Fc-tagged, low endotoxin at 0.5 µg/mL (100 µL/well) can bind Anti-CD30 Mab, Human IgG1 with a linear range of 0.1-1.6 ng/mL (QC tested).
<b>Molecular Mass</b>	66.3 kDa
<b>Endotoxin</b>	Less than 0.01 EU per µg by the LAL method.

 Tel: 1-631-559-9269 1-516-512-3133

 Email: [info@creative-biomart.com](mailto:info@creative-biomart.com)  Fax: 1-631-938-8127

 45-1 Ramsey Road, Shirley, NY 11967, USA

<b>Purity</b>	>95% as determined by SDS-PAGE.
<b>Notes</b>	Please avoid repeated freeze-thaw cycles.
<b>Stability</b>	No activity loss is observed after storage at: 4-8 centigrade for 12 months in lyophilized state; -70 centigrade for 3 months under sterile conditions after reconstitution.
<b>Storage</b>	For long term storage, the product should be stored at lyophilized state at -20 centigrade or lower.
<b>Reconstitution</b>	It is recommended that sterile water be added to the vial to prepare a stock solution of 0.2 mg/ml. Centrifuge the vial at 4 centigrade before opening to recover the entire contents.

## GENE INFORMATION

<b>Gene Name</b>	TNFRSF8 tumor necrosis factor receptor superfamily, member 8 [ Homo sapiens ]
<b>Official Symbol</b>	TNFRSF8
<b>Synonyms</b>	TNFRSF8; tumor necrosis factor receptor superfamily, member 8; CD30, D1S166E; KI 1; Ki-1 antigen; CD30L receptor; CD30; Ki-1; D1S166E;
<b>Gene ID</b>	943
<b>mRNA Refseq</b>	NM_001243
<b>Protein Refseq</b>	NP_001234
<b>MIM</b>	153243

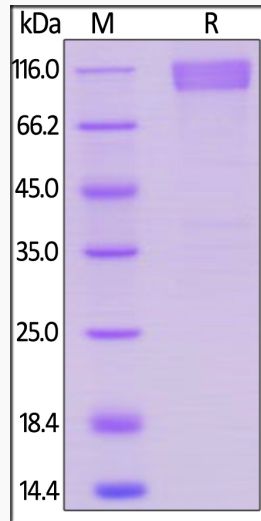
 Tel: 1-631-559-9269 1-516-512-3133

 Email: [info@creative-biomart.com](mailto:info@creative-biomart.com)  Fax: 1-631-938-8127

 45-1 Ramsey Road, Shirley, NY 11967, USA

UniProt ID

P28908



 Tel: 1-631-559-9269 1-516-512-3133

 Email: [info@creative-biomart.com](mailto:info@creative-biomart.com)  Fax: 1-631-938-8127

 45-1 Ramsey Road, Shirley, NY 11967, USA