

Recombinant Human TNFRSF8 Protein, His-tagged

Cat. No. TNFRSF8-451H **Lot. No.** (See product label)

SPECIFICATION

Product Overview	Recombinant Human TNFRSF8 Protein (Met464-Lys595) with N-His tag was expressed in E. coli.
Species	Human
Source	E.coli
ProteinLength	Met464-Lys595
Description	The protein encoded by this gene is a member of the TNF-receptor superfamily. This receptor is expressed by activated, but not by resting, T and B cells. TRAF2 and TRAF5 can interact with this receptor, and mediate the signal transduction that leads to the activation of NF-kappaB. This receptor is a positive regulator of apoptosis, and also has been shown to limit the proliferative potential of autoreactive CD8 effector T cells and protect the body against autoimmunity. Two alternatively spliced transcript variants of this gene encoding distinct isoforms have been reported.
Form	Freeze-dried powder
Molecular Mass	Predicted Molecular Mass: 17.8 kDa Accurate Molecular Mass: 21 kDa
Purity	> 97%
Applications	Positive Control; Immunogen; SDS-PAGE; WB.

 Tel: 1-631-559-9269 1-516-512-3133

 Email: info@creative-biomart.com  Fax: 1-631-938-8127

 45-1 Ramsey Road, Shirley, NY 11967, USA



Stability	The thermal stability is described by the loss rate. The loss rate was determined by accelerated thermal degradation test, that is, incubate the protein at 37 centigrade for 48h, and no obvious degradation and precipitation were observed. The loss rate is less than 5% within the expiration date under appropriate storage condition.
Storage	Avoid repeated freeze/thaw cycles. Store at 2-8 centigrade for one month. Aliquot and store at -80 centigrade for 12 months.
Storage Buffer	PBS, pH7.4, containing 0.01% SKL, 1 mM DTT, 5% Trehalose and Proclin300.
Reconstitution	Reconstitute in sterile water to a concentration of 0.1-1.0 mg/mL. Do not vortex.

GENE INFORMATION

Gene Name	TNFRSF8 tumor necrosis factor receptor superfamily, member 8 [Homo sapiens (human)]
Official Symbol	TNFRSF8
Synonyms	TNFRSF8; tumor necrosis factor receptor superfamily, member 8; CD30, D1S166E; tumor necrosis factor receptor superfamily member 8; KI 1; Ki-1 antigen; CD30L receptor; cytokine receptor CD30; lymphocyte activation antigen CD30; CD30; Ki-1; D1S166E
Gene ID	943
mRNA Refseq	NM_001243
Protein Refseq	NP_001234
MIM	153243

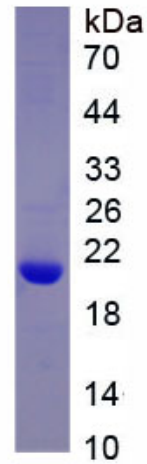
Tel: 1-631-559-9269 1-516-512-3133

Email: info@creative-biomart.com Fax: 1-631-938-8127

45-1 Ramsey Road, Shirley, NY 11967, USA

UniProt ID

P28908



 Tel: 1-631-559-9269 1-516-512-3133

 Email: info@creative-biomart.com  Fax: 1-631-938-8127

 45-1 Ramsey Road, Shirley, NY 11967, USA