

Recombinant Human TNFRSF8 Protein (Met1-Lys379), C-His tagged

Cat. No. TNFRSF8-5335H Lot. No. (See product label)

SPECIFICATION

Product Overview	Recombinant human TNFRSF8 (Met1-Lys379) fused with the C-terminal His tag was expressed in Mammalian cells.
Species	Human
Source	Mammalian Cells
ProteinLength	Met1-Lys379
Description	<p>Human CD30 is also known as TNFRSF8, is a cell membrane protein of the tumor necrosis factor receptor family and tumor marker. TNFRSF-8 is expressed by activated, but not by resting, T and B cells. Also, CD30 is expressed on classical Hodgkin Lymphoma cells together with CD15. CD30 is the receptor for TNFSF8/CD30L. CD30 can interact with TRAF2 and TRAF5, and mediate the signal transduction that leads to the activation of NF-kappa-B. TNFRSF8 may play a role in the regulation of cellular growth and transformation of activated lymphoblasts. TNFRSF8 is a positive regulator of apoptosis, and also has been shown to limit the proliferative potential of autoreactive CD8 effector T cells and protect the body against autoimmunity.</p>
Form	Lyophilized powder/frozen liquid
Molecular Mass	41.8 kDa

 Tel: 1-631-559-9269 1-516-512-3133

 Email: info@creative-biomart.com  Fax: 1-631-938-8127

 45-1 Ramsey Road, Shirley, NY 11967, USA

Endotoxin	< 1.0 EU/μg of the protein as determined by the LAL method.
Purity	>90% as determined by SDS-PAGE.
Notes	For research use only.
Storage	Use a manual defrost freezer and avoid repeated freeze thaw cycles. Store at 2 to 8 centigrade for one week. Store at -20 to -80 centigrade for twelve months from the date of receipt.
Storage Buffer	Supplied as solution form in PBS or lyophilized from PBS.
Reconstitution	Reconstitute in sterile water for a stock solution.
Shipping	They are shipped out with dry ice/blue ice unless customers require otherwise.

GENE INFORMATION

Gene Name	TNFRSF8 tumor necrosis factor receptor superfamily, member 8 [Homo sapiens (human)]
Official Symbol	TNFRSF8
Synonyms	TNFRSF8; tumor necrosis factor receptor superfamily, member 8; CD30, D1S166E; tumor necrosis factor receptor superfamily member 8; KI 1; Ki-1 antigen; CD30L receptor; cytokine receptor CD30; lymphocyte activation antigen CD30; CD30; Ki-1; D1S166E;
Gene ID	943
mRNA Refseq	NM_001243

 Tel: 1-631-559-9269 1-516-512-3133

 Email: info@creative-biomart.com  Fax: 1-631-938-8127

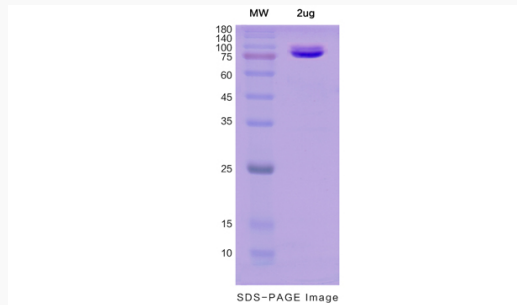
 45-1 Ramsey Road, Shirley, NY 11967, USA

Protein Refseq NP_001234

MIM 153243

UniProt ID P28908

SDS-PAGE



 Tel: 1-631-559-9269 1-516-512-3133

 Email: info@creative-biomart.com  Fax: 1-631-938-8127

 45-1 Ramsey Road, Shirley, NY 11967, USA