

Active Recombinant Human TNFRSF8 protein, His-tagged

Cat. No. TNFRSF8-563H Lot. No. (See product label)

SPECIFICATION

Product Overview	Active Recombinant Human TNFRSF8 protein(NP_001234.2)(Met 1-Lys 379) was expressed in HEK293, fused with a polyhistidine tag at the C-terminus.
Species	Human
Source	HEK293
ProteinLength	1-379 aa
Form	Lyophilized from sterile PBS, pH 7.4.
Bio-activity	Measured by its binding ability in a functional ELISA. Immobilized recombinant human CD30 at 2 µg/ml (100 µl/well) can bind human CD30L Fc Chimera with a linear range of 6.4-800 ng/ml.
Molecular Mass	The secreted recombinant human TNFRSF8 consists of 372 amino acids and has a predicted molecular mass of 40 kDa. In SDS-PAGE under reducing conditions, the apparent molecular mass of rhTNFRSF8 is approximately 75-90 kDa due to glycosylation.
Endotoxin	< 1.0 EU per µg of the protein as determined by the LAL method.
Purity	> 97 % as determined by SDS-PAGE
Storage	Store it under sterile conditions at -20°C to -80°C upon receiving. Recommend to

 Tel: 1-631-559-9269 1-516-512-3133

 Email: info@creative-biomart.com  Fax: 1-631-938-8127

 45-1 Ramsey Road, Shirley, NY 11967, USA

aliquot the protein into smaller quantities for optimal storage. Avoid repeated freeze-thaw cycles.

Reconstitution

It is recommended that sterile water be added to the vial to prepare a stock solution of 0.2 ug/ul. Centrifuge the vial at 4°C before opening to recover the entire contents.

GENE INFORMATION

Gene Name [TNFRSF8 tumor necrosis factor receptor superfamily, member 8 \[Homo sapiens \]](#)

Official Symbol [TNFRSF8](#)

Synonyms

TNFRSF8; tumor necrosis factor receptor superfamily, member 8; CD30, D1S166E; tumor necrosis factor receptor superfamily member 8; KI 1; Ki-1 antigen; CD30L receptor; cytokine receptor CD30; lymphocyte activation antigen CD30; CD30; Ki-1; D1S166E;

Gene ID [943](#)

mRNA Refseq [NM_001243](#)

Protein Refseq [NP_001234](#)

MIM [153243](#)

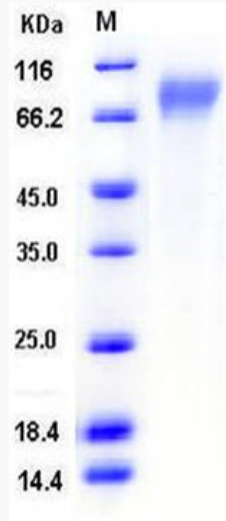
UniProt ID [P28908](#)

 Tel: 1-631-559-9269 1-516-512-3133

 Email: info@creative-biomart.com  Fax: 1-631-938-8127

 45-1 Ramsey Road, Shirley, NY 11967, USA

SDS-PAGE



 Tel: 1-631-559-9269 1-516-512-3133

 Email: info@creative-biomart.com  Fax: 1-631-938-8127

 45-1 Ramsey Road, Shirley, NY 11967, USA