

Active Recombinant Human TNFRSF9 Protein, His-tagged

Cat. No. TNFRSF9-711H Lot. No. (See product label)

SPECIFICATION

Product Overview	Recombinant Human TNFRSF9 Protein(Glu19-Ser184), fused with His tag, was expressed in HEK293.
Species	Human
Source	HEK293
ProteinLength	Glu19-Ser184
Form	Lyophilized from 0.22 µm filtered solution in PBS, pH7.4.
Bio-activity	Recombinant Human CD137L[TNFRSF9]/mFC Protein captured on Protein A chip , can bind Recombinant Human CD137/ His Protein with a KD constant of 1.14E-08 M, determined in a SPR assay .
Molecular Mass	The protein has a calculated MW of 19kDa.The reducing (R) heterodimer protein migrates as 30-50 kDa due to glycosylation
Endotoxin	<1EU/mg
Purity	SDS-PAGE>95%
Storage	Store at -20°C.
Reconstitution	It is recommended that sterile water be added to the vial to prepare a stock solution of

 Tel: 1-631-559-9269 1-516-512-3133

 Email: info@creative-biomart.com  Fax: 1-631-938-8127

 45-1 Ramsey Road, Shirley, NY 11967, USA

0.2 ug/ul. Centrifuge the vial at 4°C before opening to recover the entire contents.

GENE INFORMATION

Gene Name TNFRSF9 tumor necrosis factor receptor superfamily, member 9 [Homo sapiens]

Official Symbol TNFRSF9

Synonyms TNFRSF9; tumor necrosis factor receptor superfamily, member 9; ILA; tumor necrosis factor receptor superfamily member 9; 4 1BB; CD137; CD137 antigen; T cell antigen ILA; T-cell antigen ILA; 4-1BB ligand receptor; homolog of mouse 4-1BB; receptor protein 4-1BB; T-cell antigen 4-1BB homolog; induced by lymphocyte activation (ILA); interleukin-activated receptor, homolog of mouse Ly63; 4-1BB; CDw137; MGC2172; FLJ43501;

Gene ID 3604

mRNA Refseq NM_001561

Protein Refseq NP_001552

MIM 602250

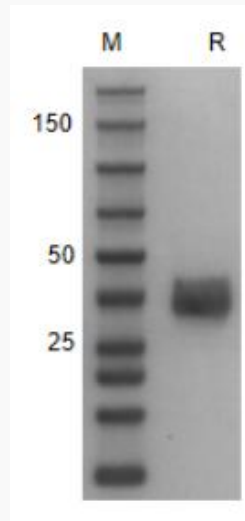
UniProt ID Q07011

 Tel: 1-631-559-9269 1-516-512-3133

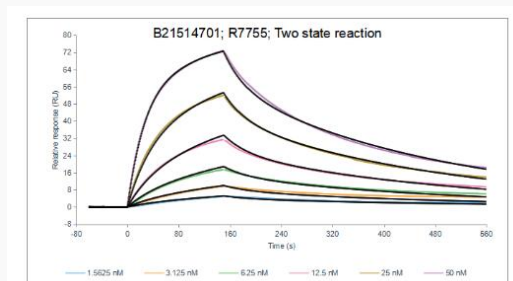
 Email: info@creative-biomart.com  Fax: 1-631-938-8127

 45-1 Ramsey Road, Shirley, NY 11967, USA

SDS-PAGE



SPR



 Tel: 1-631-559-9269 1-516-512-3133

 Email: info@creative-biomart.com  Fax: 1-631-938-8127

 45-1 Ramsey Road, Shirley, NY 11967, USA