

Recombinant Human TNFSF10 protein

Cat. No. TNFSF10-03H Lot. No. (See product label)

SPECIFICATION

Product Overview	Recombinant Human TNFSF10 protein(NP_003801.1)(Val114-Gly281) was expressed in E.coli.
Species	Human
Source	E.coli
ProteinLength	Val114-Gly281
Tag	Non
Form	Lyophilized from 0.22µm filtered solution in PBS (pH 7.4). Normally 5% trehalose is added as protectant before lyophilization.
Bio-activity	Immobilized Human TRAIL, No Tag at 5ug/ml (100ul/well) on the plate. Dose response curve for Human TRAIL R1, hFc Tag with the EC50 of 11.1ng/ml determined by ELISA (QC Test).
Molecular Mass	The protein has a predicted MW of 19.6 kDa same as Tris-Bis PAGE result.
Endotoxin	Less than 1EU per µg by the LAL method.
Purity	> 95% as determined by Tris-Bis PAGE;> 95% as determined by SEC-HPLC
Storage	Reconstituted protein stable at -80°C for 12 months, 4°C for 1 week. Use a manual

 Tel: 1-631-559-9269 1-516-512-3133

 Email: info@creative-biomart.com  Fax: 1-631-938-8127

 45-1 Ramsey Road, Shirley, NY 11967, USA

defrost freezer and avoid repeated freeze-thaw cycles.

Reconstitution

Centrifuge tubes before opening. Reconstituting to a concentration more than 100 µg/ml is recommended. Dissolve the lyophilized protein in distilled water.

GENE INFORMATION

Gene Name TNFSF10 tumor necrosis factor (ligand) superfamily, member 10 [Homo sapiens]

Official Symbol TNFSF10

Synonyms

TNFSF10; tumor necrosis factor (ligand) superfamily, member 10; tumor necrosis factor ligand superfamily member 10; Apo 2L; CD253; TL2; TRAIL; Apo-2 ligand; TNF-related apoptosis inducing ligand TRAIL; tumor necrosis factor (ligand) family, member 10; chemokine tumor necrosis factor ligand superfamily member 10; tumor necrosis factor apoptosis-inducing ligand splice variant delta; APO2L; Apo-2L;

Gene ID 8743

mRNA Refseq NM_001190942

Protein Refseq NP_001177871

MIM 603598

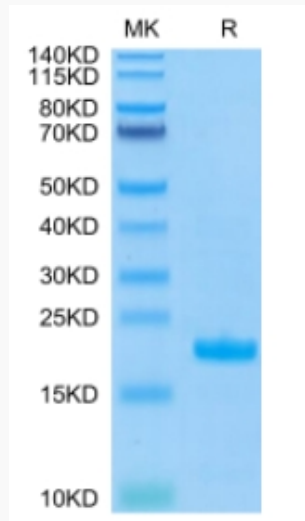
UniProt ID P50591

 Tel: 1-631-559-9269 1-516-512-3133

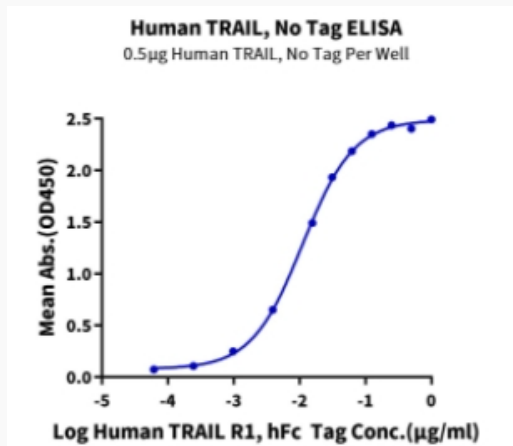
 Email: info@creative-biomart.com  Fax: 1-631-938-8127

 45-1 Ramsey Road, Shirley, NY 11967, USA

Tris-Bis PAGE



ELISA Data



 Tel: 1-631-559-9269 1-516-512-3133

 Email: info@creative-biomart.com  Fax: 1-631-938-8127

 45-1 Ramsey Road, Shirley, NY 11967, USA