

Recombinant Human TNFSF12 protein, hFc-tagged

Cat. No. TNFSF12-1547H **Lot. No.** (See product label)

SPECIFICATION

Product Overview	Recombinant Human TNFSF12 protein(O43508-1)(Ser43-His249), fused with C-terminal hFc tag, was expressed in HEK293.
Species	Human
Source	C-hFc
ProteinLength	Ser43-His249
Tag	C-hFc
Form	Supplied as 0.22µm filtered solution in PBS, 200mM L-Arginine (pH 7.4).
Bio-activity	Immobilized Human TNFSF12, hFc Tag at 5µg/ml (100µl/well) on the plate. Dose response curve for Biotinylated Anti-TNFSF12 Antibody, hFc Tag with the EC50 of 0.14µg/ml determined by ELISA.
Molecular Mass	The protein has a predicted MW of 49.62 kDa. Due to enzyme lysis and glycosylation, the protein migrates to 50-60 kDa based on Tris-Bis PAGE result.
Endotoxin	Less than 1EU per µg by the LAL method.
Purity	> 95% as determined by Tris-Bis PAGE; > 95% as determined by HPLC.
Storage	Valid for 12 months from date of receipt when stored at -80°C.;Recommend to aliquot

 Tel: 1-631-559-9269 1-516-512-3133

 Email: info@creative-biomart.com  Fax: 1-631-938-8127

 45-1 Ramsey Road, Shirley, NY 11967, USA

the protein into smaller quantities for optimal storage. Please do not repeated freeze-thaw cycles.

Reconstitution

It is recommended that sterile water be added to the vial to prepare a stock solution of 0.2 ug/ul. Centrifuge the vial at 4°C before opening to recover the entire contents.

GENE INFORMATION

Gene Name TNFSF12 tumor necrosis factor (ligand) superfamily, member 12 [Homo sapiens]

Official Symbol TNFSF12

Synonyms

TNFSF12; tumor necrosis factor (ligand) superfamily, member 12; tumor necrosis factor ligand superfamily member 12; APO3L; DR3LG; TWEAK; APO3 ligand; APO3/DR3 ligand; TNF-related WEAK inducer of apoptosis; MGC20669; MGC129581;

Gene ID 8742

mRNA Refseq NM_003809

Protein Refseq NP_003800

MIM 602695

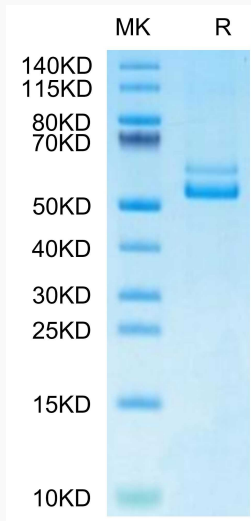
UniProt ID O43508

 Tel: 1-631-559-9269 1-516-512-3133

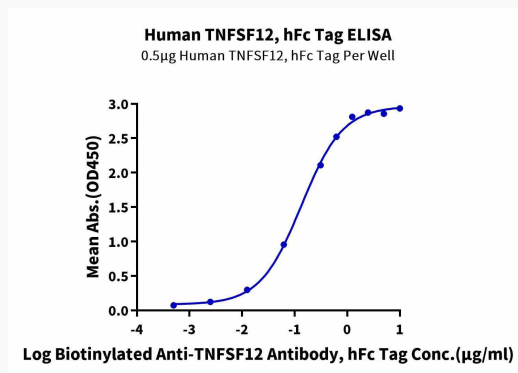
 Email: info@creative-biomart.com  Fax: 1-631-938-8127

 45-1 Ramsey Road, Shirley, NY 11967, USA

Tris-Bis PAGE



ELISA



 Tel: 1-631-559-9269 1-516-512-3133

 Email: info@creative-biomart.com  Fax: 1-631-938-8127

 45-1 Ramsey Road, Shirley, NY 11967, USA