

Active Recombinant Human TNFSF13B protein, His-Flag-tagged

Cat. No. TNFSF13B-0385H **Lot. No.** (See product label)

SPECIFICATION

Product Overview	Recombinant Human TNFSF13B protein(Q9Y275)(Glu140-Leu285), fused with His tag and Flag tag, was expressed in HEK293.
Species	Human
Source	HEK293
ProteinLength	Glu140-Leu285
Form	Lyophilized from 0.22 μm filtered solution in PBS, pH7.4.
Bio-activity	When Recombinant Human BAFF/His Protein is immobilized at 5g/mL (100 μ/well), the concentration of Recombinant Mouse BAFFR/ hFC Protein that produces 50% of the optimal binding response is approximately 60 ng/ml.
Molecular Mass	The protein has a calculated MW of 53kDa. The reducing (R) heterodimer protein migrates as 50-70 kDa due to glycosylation
Endotoxin	<1EU/mg
Purity	SDS-PAGE>95%SEC>95%
Storage	Store at -20°C.

 Tel: 1-631-559-9269 1-516-512-3133

 Email: info@creative-biomart.com  Fax: 1-631-938-8127

 45-1 Ramsey Road, Shirley, NY 11967, USA

Reconstitution sterile H22O

GENE INFORMATION

Gene Name TNFSF13B tumor necrosis factor (ligand) superfamily, member 13b [Homo sapiens]

Official Symbol TNFSF13B

Synonyms TNFSF13B; tumor necrosis factor (ligand) superfamily, member 13b; TNFSF20; tumor necrosis factor ligand superfamily member 13B; BAFF; BLYS; CD257; TALL 1; TALL1; THANK; delta BAFF; Delta4 BAFF; B-lymphocyte stimulator; B-cell-activating factor; ApoL related ligand TALL-1; TNF homolog that activates apoptosis; dendritic cell-derived TNF-like molecule; tumor necrosis factor-like protein ZTNF4; TNF and ApoL-related leukocyte expressed ligand 1; tumor necrosis factor (ligand) superfamily, member 20; DTL; ZTNF4; TALL-1;

Gene ID 10673

mRNA Refseq NM_001145645

Protein Refseq NP_001139117

MIM 603969

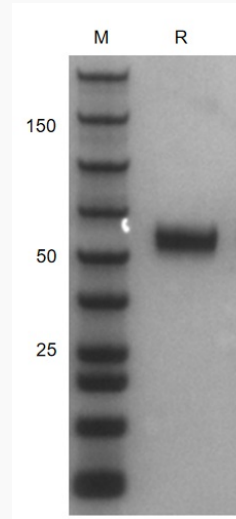
UniProt ID Q9Y275

 Tel: 1-631-559-9269 1-516-512-3133

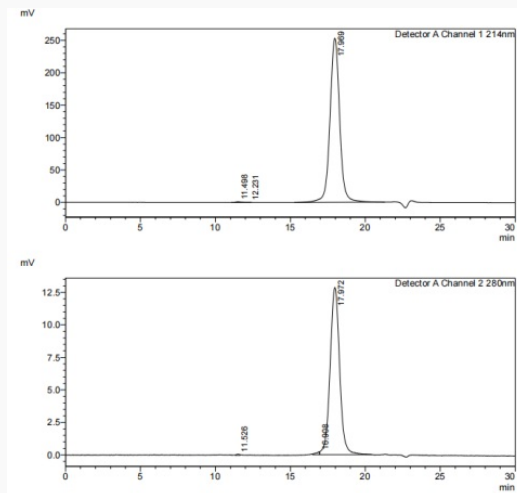
 Email: info@creative-biomart.com  Fax: 1-631-938-8127

 45-1 Ramsey Road, Shirley, NY 11967, USA

SDS-PAGE



SDS-HPLC

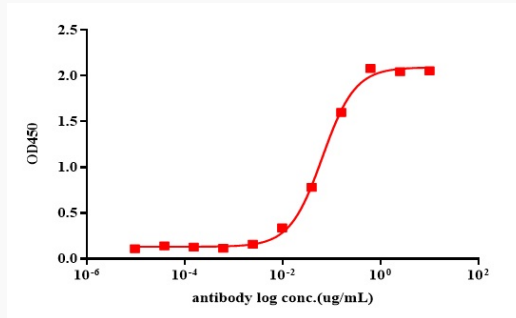


 Tel: 1-631-559-9269 1-516-512-3133

 Email: info@creative-biomart.com  Fax: 1-631-938-8127

 45-1 Ramsey Road, Shirley, NY 11967, USA

ELISA



 Tel: 1-631-559-9269 1-516-512-3133

 Email: info@creative-biomart.com  Fax: 1-631-938-8127

 45-1 Ramsey Road, Shirley, NY 11967, USA