

## Recombinant Human TNFSF14 protein, His-tagged

Cat. No. TNFSF14-207H Lot. No. (See product label)

### SPECIFICATION

<b>Product Overview</b>	Human LIGHT is expressed from HEK293 with a His tag at the C-terminal. It contains Asp74-Val240.
<b>Species</b>	Human
<b>Source</b>	HEK293
<b>ProteinLength</b>	It contains Asp74-Val240.
<b>Description</b>	LIGHT, also known as tumor necrosis factor superfamily member 14 (TNFSF14), is a secreted protein of the TNF superfamily. It is recognized by herpesvirus entry mediator (HVEM), as well as decoy receptor 3. This protein has been shown to stimulate the proliferation of T cells, and trigger apoptosis of various tumor cells.
<b>Form</b>	Supplied as 0.22um filtered solution in PBS (pH 7.4).
<b>Molecular Mass</b>	The protein has a predicted MW of 19kDa. Due to glycosylation, the protein migrates to 25KDa-30KDa based on Bis-Tris PAGE result.
<b>Endotoxin</b>	Less than 1EU per ug by the LAL method.
<b>Purity</b>	> 95% as determined by SDS-PAGE
<b>Storage</b>	The product should be stored at -70°C. Please do not repeated freeze-thaw cycles.

 Tel: 1-631-559-9269 1-516-512-3133

 Email: [info@creative-biomart.com](mailto:info@creative-biomart.com)  Fax: 1-631-938-8127

 45-1 Ramsey Road, Shirley, NY 11967, USA

**Reconstitution** It is recommended that sterile water be added to the vial to prepare a stock solution of 0.2 ug/ul. Centrifuge the vial at 4°C before opening to recover the entire contents.

## GENE INFORMATION

**Gene Name** TNFSF14 tumor necrosis factor (ligand) superfamily, member 14 [ Homo sapiens ]

**Official Symbol** TNFSF14

**Synonyms** CD258 antigen; CD258;TNFSF14; delta transmembrane LIGHTHerpes virus entry mediator ligand; Herpesvirus entry mediator ligand; HVEM-L; HVEMLherpesvirus entry mediator-ligand; ligand for herpesvirus entry mediator; LIGHT; LIGHTHerpesvirus entry mediator A; LTg; TR2; tumor necrosis factor (ligand) superfamily, member 14; tumor necrosis factor ligand superfamily member 14; tumor necrosis factor receptor-like 2; tumor necrosis factor superfamily member LIGHT

**Gene ID** 8740

**mRNA Refseq** NM\_003807

**Protein Refseq** NP\_003798

**MIM** 604520

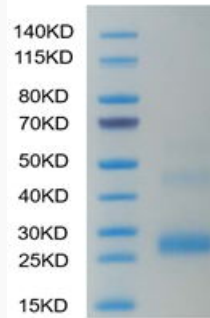
**UniProt ID** O43557

 Tel: 1-631-559-9269 1-516-512-3133

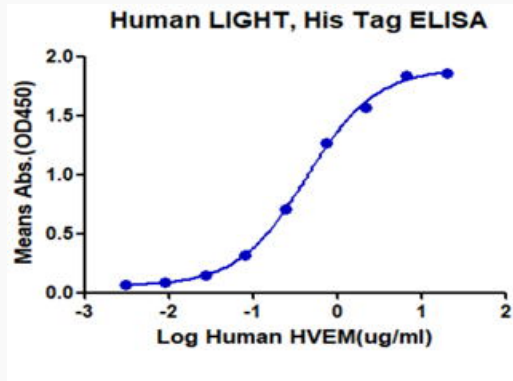
 Email: [info@creative-biomart.com](mailto:info@creative-biomart.com)  Fax: 1-631-938-8127

 45-1 Ramsey Road, Shirley, NY 11967, USA

**Tris-Bis PAGE**



**ELISA data**



 Tel: 1-631-559-9269 1-516-512-3133

 Email: [info@creative-biomart.com](mailto:info@creative-biomart.com)  Fax: 1-631-938-8127

 45-1 Ramsey Road, Shirley, NY 11967, USA