

## Recombinant Human TNFSF14 protein, His-tagged

Cat. No. TNFSF14-217H Lot. No. (See product label)

### SPECIFICATION

<b>Product Overview</b>	Recombinant Human TNFSF14 protein(O43557-1)(Asp74-Val240), fused with N-terminal His tag, was expressed in HEK293.
<b>Species</b>	Human
<b>Source</b>	HEK293
<b>ProteinLength</b>	Asp74-Val240
<b>Tag</b>	N-His
<b>Form</b>	Lyophilized from 0.22µm filtered solution in PBS (pH 7.4). Normally 5% trehalose is added as protectant before lyophilization.
<b>Bio-activity</b>	Immobilized Human LIGHT, His Tag at 2 µg/ml (100 µl/Well) on the plate. Dose response curve for Human HVEM, hFc Tag with the EC50 of 15.3 ng/ml determined by ELISA.
<b>Molecular Mass</b>	The protein has a predicted MW of 19 kDa. Due to glycosylation, the protein migrates to 25-30 kDa based on Tris-Bis PAGE result.
<b>Endotoxin</b>	Less than 1EU per µg by the LAL method.
<b>Purity</b>	> 95% as determined by Tris-Bis PAGE; > 95% as determined by HPLC

 Tel: 1-631-559-9269 1-516-512-3133

 Email: [info@creative-biomart.com](mailto:info@creative-biomart.com)  Fax: 1-631-938-8127

 45-1 Ramsey Road, Shirley, NY 11967, USA

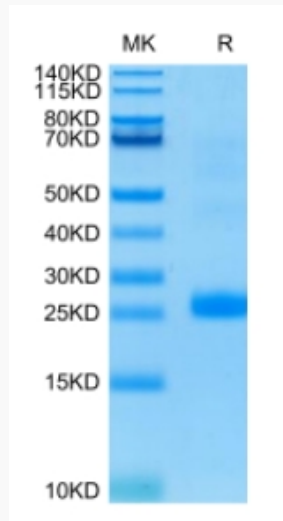
<b>Storage</b>	Reconstituted protein stable at -80°C for 12 months, 4°C for 1 week. Use a manual defrost freezer and avoid repeated freeze-thaw cycles.
<b>Reconstitution</b>	Centrifuge tubes before opening. Reconstituting to a concentration more than 100 µg/ml is recommended. Dissolve the lyophilized protein in distilled water.
<b>GENE INFORMATION</b>	
<b>Gene Name</b>	TNFSF14 tumor necrosis factor (ligand) superfamily, member 14 [ Homo sapiens ]
<b>Official Symbol</b>	TNFSF14
<b>Synonyms</b>	TNFSF14; tumor necrosis factor (ligand) superfamily, member 14; tumor necrosis factor ligand superfamily member 14; CD258; HVEM L; LIGHT; LTg; delta transmembrane LIGHT; herpesvirus entry mediator A; herpesvirus entry mediator ligand; herpesvirus entry mediator-ligand; herpes virus entry mediator ligand; ligand for herpesvirus entry mediator; tumor necrosis factor receptor-like 2; tumor necrosis factor superfamily member LIGHT; TR2; HVEM L;
<b>Gene ID</b>	8740
<b>mRNA Refseq</b>	NM_003807
<b>Protein Refseq</b>	NP_003798
<b>MIM</b>	604520
<b>UniProt ID</b>	O43557

 Tel: 1-631-559-9269 1-516-512-3133

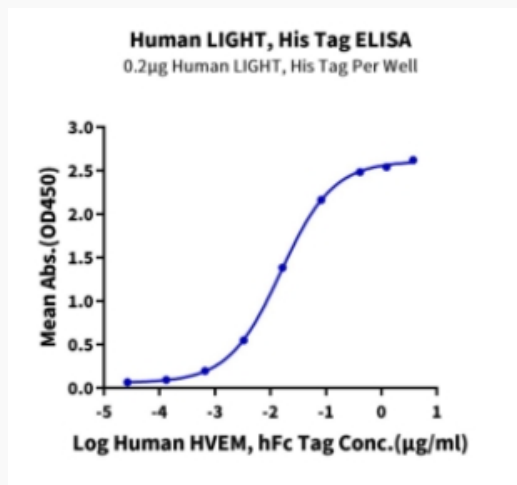
 Email: [info@creative-biomart.com](mailto:info@creative-biomart.com)  Fax: 1-631-938-8127

 45-1 Ramsey Road, Shirley, NY 11967, USA

**Tris-Bis PAGE**



**ELISA Data**



 Tel: 1-631-559-9269 1-516-512-3133

 Email: [info@creative-biomart.com](mailto:info@creative-biomart.com)  Fax: 1-631-938-8127

 45-1 Ramsey Road, Shirley, NY 11967, USA