

Recombinant Human TNFSF14 Protein (Leu59-Val240), N-His tagged

Cat. No. TNFSF14-5236H **Lot. No.** (See product label)

SPECIFICATION

Product Overview	Recombinant human TNFSF14 (Leu59-Val240) fused with the N-terminal His tag was expressed in Mammalian cells.
Species	Human
Source	Mammalian Cells
ProteinLength	Leu59-Val240
Form	Lyophilized powder/frozen liquid
Molecular Mass	20.02 kDa
Endotoxin	< 1.0 EU/μg of the protein as determined by the LAL method.
Purity	>90% as determined by SDS-PAGE.
Notes	For research use only.
Storage	Use a manual defrost freezer and avoid repeated freeze thaw cycles. Store at 2 to 8 centigrade for one week. Store at -20 to -80 centigrade for twelve months from the date of receipt.
Storage Buffer	Supplied as solution form in PBS or lyophilized from PBS.

 Tel: 1-631-559-9269 1-516-512-3133

 Email: info@creative-biomart.com  Fax: 1-631-938-8127

 45-1 Ramsey Road, Shirley, NY 11967, USA

Reconstitution Reconstitute in sterile water for a stock solution.

Shipping They are shipped out with dry ice/blue ice unless customers require otherwise.

GENE INFORMATION

Gene Name TNFSF14 tumor necrosis factor (ligand) superfamily, member 14 [Homo sapiens (human)]

Official Symbol TNFSF14

Synonyms

TNFSF14; tumor necrosis factor (ligand) superfamily, member 14; tumor necrosis factor ligand superfamily member 14; CD258; HVEM L; LIGHT; LTg; delta transmembrane LIGHT; herpesvirus entry mediator A; herpesvirus entry mediator ligand; herpesvirus entry mediator-ligand; herpes virus entry mediator ligand; ligand for herpesvirus entry mediator; tumor necrosis factor receptor-like 2; tumor necrosis factor superfamily member LIGHT; TR2; HVEM L;

Gene ID 8740

mRNA Refseq NM_003807

Protein Refseq NP_003798

MIM 604520

UniProt ID O43557

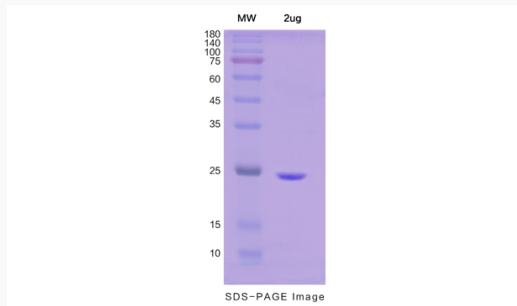
 Tel: 1-631-559-9269 1-516-512-3133

 Email: info@creative-biomart.com  Fax: 1-631-938-8127

 45-1 Ramsey Road, Shirley, NY 11967, USA



SDS-PAGE



Tel: 1-631-559-9269 1-516-512-3133

Email: info@creative-biomart.com Fax: 1-631-938-8127

45-1 Ramsey Road, Shirley, NY 11967, USA