

# Recombinant Human TNFSF14 Protein (Leu83-Val240), N-His tagged

Cat. No. TNFSF14-5237H Lot. No. (See product label)

## SPECIFICATION

<b>Product Overview</b>	Recombinant human TNFSF14 (Leu83-Val240) fused with the N-terminal His tag was expressed in Mammalian cells.
<b>Species</b>	Human
<b>Source</b>	Mammalian Cells
<b>ProteinLength</b>	Leu83-Val240
<b>Form</b>	Lyophilized powder/frozen liquid
<b>Molecular Mass</b>	17.38 kDa
<b>Endotoxin</b>	< 1.0 EU/μg of the protein as determined by the LAL method.
<b>Purity</b>	>90% as determined by SDS-PAGE.
<b>Notes</b>	For research use only.
<b>Storage</b>	Use a manual defrost freezer and avoid repeated freeze thaw cycles. Store at 2 to 8 centigrade for one week. Store at -20 to -80 centigrade for twelve months from the date of receipt.
<b>Storage Buffer</b>	Supplied as solution form in PBS or lyophilized from PBS.

 Tel: 1-631-559-9269 1-516-512-3133

 Email: [info@creative-biomart.com](mailto:info@creative-biomart.com)  Fax: 1-631-938-8127

 45-1 Ramsey Road, Shirley, NY 11967, USA

**Reconstitution** Reconstitute in sterile water for a stock solution.

**Shipping** They are shipped out with dry ice/blue ice unless customers require otherwise.

## GENE INFORMATION

**Gene Name** TNFSF14 tumor necrosis factor (ligand) superfamily, member 14 [ Homo sapiens (human) ]

**Official Symbol** TNFSF14

**Synonyms**

TNFSF14; tumor necrosis factor (ligand) superfamily, member 14; tumor necrosis factor ligand superfamily member 14; CD258; HVEM L; LIGHT; LTg; delta transmembrane LIGHT; herpesvirus entry mediator A; herpesvirus entry mediator ligand; herpesvirus entry mediator-ligand; herpes virus entry mediator ligand; ligand for herpesvirus entry mediator; tumor necrosis factor receptor-like 2; tumor necrosis factor superfamily member LIGHT; TR2; HVEM L;

**Gene ID** 8740

**mRNA Refseq** NM\_003807


**Protein Refseq** NP\_003798

**MIM** 604520

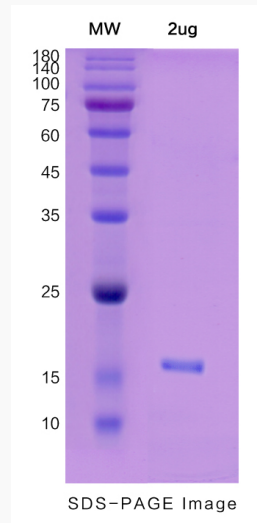
**UniProt ID** O43557

 Tel: 1-631-559-9269 1-516-512-3133

 Email: [info@creative-biomart.com](mailto:info@creative-biomart.com)  Fax: 1-631-938-8127

 45-1 Ramsey Road, Shirley, NY 11967, USA

**SDS-PAGE**



 Tel: 1-631-559-9269 1-516-512-3133

 Email: [info@creative-biomart.com](mailto:info@creative-biomart.com)  Fax: 1-631-938-8127

 45-1 Ramsey Road, Shirley, NY 11967, USA