

Recombinant Mouse TNFSF15 protein, His-Avi-tagged

Cat. No. TNFSF15-1681M Lot. No. (See product label)

SPECIFICATION

Product Overview	Recombinant Mouse TNFSF15 protein(Q5UBV8)(Ala61-Leu252), fused with N-terminal His and Avi tag, was expressed in HEK293.
Species	Mouse
Source	N-His-Avi
ProteinLength	Ala61-Leu252
Tag	N-His-Avi
Form	Lyophilized from 0.22µm filtered solution in PBS (pH 7.4). Normally 8% trehalose is added as protectant before lyophilization.
Bio-activity	Immobilized Mouse TNFSF15, His Tag at 0.5µg/ml (100µl/well) on the plate. Dose response curve for Anti-TNFSF15 Antibody, hFc Tag with the EC50 of 11.6ng/ml determined by ELISA.
Molecular Mass	The protein has a predicted MW of 24.40 kDa. Due to glycosylation, the protein migrates to 30-38 kDa based on Tris-Bis PAGE result.
Endotoxin	Less than 1EU per µg by the LAL method.
Purity	> 95% as determined by Tris-Bis PAGE; > 95% as determined by HPLC.

 Tel: 1-631-559-9269 1-516-512-3133

 Email: info@creative-biomart.com  Fax: 1-631-938-8127

 45-1 Ramsey Road, Shirley, NY 11967, USA

Storage Reconstituted protein stable at -80°C for 12 months, 4°C for 1 week. Use a manual defrost freezer and avoid repeated freeze-thaw cycles.

Reconstitution Centrifuge tubes before opening. Reconstituting to a concentration more than 100 µg/ml is recommended. Dissolve the lyophilized protein in distilled water.

GENE INFORMATION

Gene Name [Tnfsf15 tumor necrosis factor \(ligand\) superfamily, member 15 \[Mus musculus \]](#)

Official Symbol [TNFSF15](#)

Synonyms TNFSF15; tumor necrosis factor (ligand) superfamily, member 15; tumor necrosis factor ligand superfamily member 15; TNF ligand-related molecule 1; vascular endothelial growth inhibitor; vascular endothelial cell growth inhibitor; bM20K13.3 (tumor necrosis factor (ligand) superfamily, member 15); T11; T11a; Vegi;

Gene ID [326623](#)

mRNA Refseq [NM_177371](#)

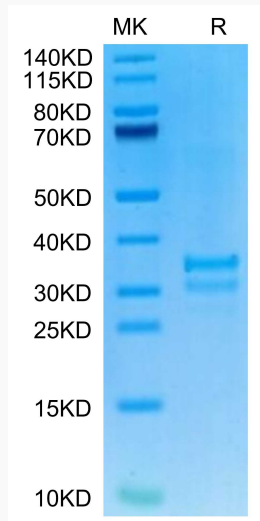
Protein Refseq [NP_796345](#)

 Tel: 1-631-559-9269 1-516-512-3133

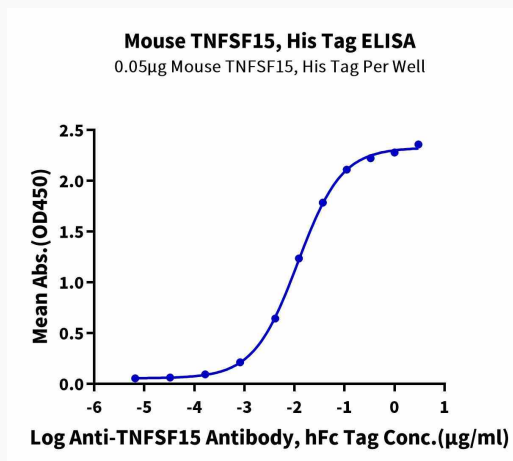
 Email: info@creative-biomart.com  Fax: 1-631-938-8127

 45-1 Ramsey Road, Shirley, NY 11967, USA

Tris-Bis PAGE



ELISA



 Tel: 1-631-559-9269 1-516-512-3133

 Email: info@creative-biomart.com  Fax: 1-631-938-8127

 45-1 Ramsey Road, Shirley, NY 11967, USA