

Recombinant Human TNFSF15 protein, His-tagged

Cat. No. TNFSF15-4678H Lot. No. (See product label)

SPECIFICATION

Product Overview	Recombinant Human TNFSF15 protein(O95150-2)(1-192 aa), fused with N-terminal His tag, was expressed in Yeast.
Species	Human
Source	Yeast
ProteinLength	1-192 aa
Form	For liquid formulations, the standard storage buffer consists of a Tris or PBS based solution supplemented with 5-50% glycerol. When provided as lyophilized powder, the product undergoes freeze-drying from a Tris- or PBS-based formulation containing 6% trehalose, adjusted to pH 8.0 prior to the lyophilization process.
Molecular Mass	23.9 kDa
AASequence	MQLTKGRLHFHSHPLSHTKHISPFVTDAPLRADGDKPRAHLTVVRQTPTQHFKNQFP ALHWEHELGLAFTKNRMNYTNKFLIPESGDYFIYSQVTFRGMTSECSEIRQAGRPN KPDSITVVITKVTDSYPEPTQLLMGTKSVCEVGSNWFQPIYLGAMFSLQEGDKLMVN VSDISLVDYTKEDKTFFGAFLL
Purity	Greater than 85% as determined by SDS-PAGE.
Storage	Store at -20°C/-80°C upon receipt, aliquoting is necessary for mutiple use. Avoid repeated freeze-thaw cycles.

 Tel: 1-631-559-9269 1-516-512-3133

 Email: info@creative-biomart.com  Fax: 1-631-938-8127

 45-1 Ramsey Road, Shirley, NY 11967, USA

Reconstitution Please reconstitute protein in deionized sterile water to a concentration of 0.1-1.0 mg/mL. Aliquot for long-term storage at -80°C.

GENE INFORMATION

Gene Name TNFSF15 tumor necrosis factor (ligand) superfamily, member 15 [Homo sapiens]

Official Symbol TNFSF15

Synonyms TNFSF15; tumor necrosis factor (ligand) superfamily, member 15; tumor necrosis factor ligand superfamily member 15; MGC129934; MGC129935; TL1; TL1A; TNF ligand related molecule 1; TNF superfamily ligand TL1A; vascular endothelial cell growth inhibitor; vascular endothelial growth inhibitor 192A; VEGI; VEGI192A; TNF ligand-related molecule 1; vascular endothelial growth inhibitor-192A;

Gene ID 9966

mRNA Refseq NM_001204344

Protein Refseq NP_001191273

MIM 604052

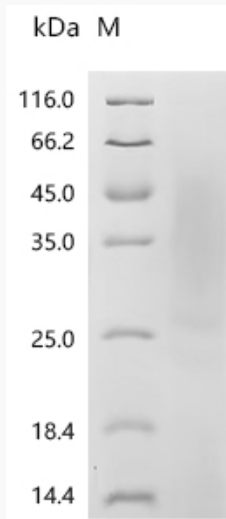
UniProt ID O95150

 Tel: 1-631-559-9269 1-516-512-3133

 Email: info@creative-biomart.com  Fax: 1-631-938-8127

 45-1 Ramsey Road, Shirley, NY 11967, USA

SDS-PAGE



 Tel: 1-631-559-9269 1-516-512-3133

 Email: info@creative-biomart.com  Fax: 1-631-938-8127

 45-1 Ramsey Road, Shirley, NY 11967, USA