

# Recombinant Human TNFSF15 Protein (Leu72-Leu251), His tagged

**Cat. No.** TNFSF15-6718H    **Lot. No.** (See product label)

## SPECIFICATION

<b>Product Overview</b>	Recombinant human TNFSF15 (Leu72-Leu251) fused with His tag was expressed in E. coli.
<b>Species</b>	Human
<b>Source</b>	E.coli
<b>ProteinLength</b>	Leu72-Leu251
<b>Form</b>	Lyophilized powder/frozen liquid
<b>Molecular Mass</b>	22.78 kDa
<b>Purity</b>	> 90 % as determined by SDS-PAGE
<b>Notes</b>	For research use only.
<b>Storage</b>	Use a manual defrost freezer and avoid repeated freeze thaw cycles. Store at 2 to 8 centigrade for one week. Store at -20 to -80 centigrade for twelve months from the date of receipt.
<b>Storage Buffer</b>	Supplied as solution form in PBS, pH 7.5 or lyophilized from PBS, pH 7.5.
<b>Reconstitution</b>	Reconstitute in sterile water for a stock solution.

 Tel: 1-631-559-9269    1-516-512-3133

 Email: [info@creative-biomart.com](mailto:info@creative-biomart.com)     Fax: 1-631-938-8127

 45-1 Ramsey Road, Shirley, NY 11967, USA

**Shipping** They are shipped out with dry ice/blue ice unless customers require otherwise.

## GENE INFORMATION

**Gene Name** TNFSF15 tumor necrosis factor (ligand) superfamily, member 15 [ Homo sapiens (human) ]

**Official Symbol** TNFSF15

**Synonyms** TNFSF15; tumor necrosis factor (ligand) superfamily, member 15; tumor necrosis factor ligand superfamily member 15; MGC129934; MGC129935; TL1; TL1A; TNF ligand related molecule 1; TNF superfamily ligand TL1A; vascular endothelial cell growth inhibitor; vascular endothelial growth inhibitor 192A; VEGI; VEGI192A; TNF ligand-related molecule 1; vascular endothelial growth inhibitor-192A;

**Gene ID** 9966

**mRNA Refseq** NM\_001204344

**Protein Refseq** NP\_001191273

**MIM** 604052

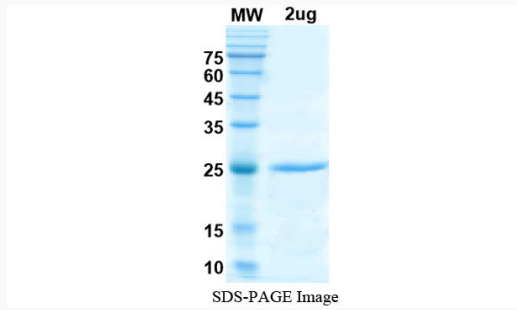
**UniProt ID** O95150

 Tel: 1-631-559-9269 1-516-512-3133

 Email: [info@creative-biomart.com](mailto:info@creative-biomart.com)  Fax: 1-631-938-8127

 45-1 Ramsey Road, Shirley, NY 11967, USA

**SDS-PAGE**



 Tel: 1-631-559-9269 1-516-512-3133

 Email: [info@creative-biomart.com](mailto:info@creative-biomart.com)  Fax: 1-631-938-8127

 45-1 Ramsey Road, Shirley, NY 11967, USA