

## Recombinant Human TNFSF8 protein, mFc-tagged

Cat. No. TNFSF8-5632H Lot. No. (See product label)

### SPECIFICATION

<b>Product Overview</b>	Recombinant Human TNFSF8 protein(P32971-1)(Gln63-Asp234), fused with N-terminal mFc tag, was expressed in HEK293.
<b>Species</b>	Human
<b>Source</b>	HEK293
<b>ProteinLength</b>	Gln63-Asp234
<b>Tag</b>	N-mFc
<b>Form</b>	Lyophilized from 0.22µm filtered solution in PBS (pH 7.4). Normally 5% trehalose is added as protectant before lyophilization.
<b>Bio-activity</b>	Immobilized Human CD30, His Tag at 0.5µg/ml (100µl/well) on the plate. Dose response curve for Human CD30 Ligand, mFc Tag with the EC50 of 10.5ng/ml determined by ELISA.
<b>Molecular Mass</b>	The protein has a predicted MW of 46.2 kDa. Due to glycosylation, the protein migrates to 62-68 kDa based on Tris-Bis PAGE result.
<b>Endotoxin</b>	Less than 1EU per µg by the LAL method.
<b>Purity</b>	> 95% as determined by Tris-Bis PAGE; > 95% as determined by HPLC;

 Tel: 1-631-559-9269 1-516-512-3133

 Email: [info@creative-biomart.com](mailto:info@creative-biomart.com)  Fax: 1-631-938-8127

 45-1 Ramsey Road, Shirley, NY 11967, USA

**Storage** Reconstituted protein stable at -80°C for 12 months, 4°C for 1 week. Use a manual defrost freezer and avoid repeated freeze-thaw cycles.

**Reconstitution** Centrifuge tubes before opening. Reconstituting to a concentration more than 100 µg/ml is recommended. Dissolve the lyophilized protein in distilled water.

## GENE INFORMATION

**Gene Name** TNFSF8 tumor necrosis factor (ligand) superfamily, member 8 [ Homo sapiens ]

**Official Symbol** TNFSF8

**Synonyms** TNFSF8; tumor necrosis factor (ligand) superfamily, member 8; CD30LG; tumor necrosis factor ligand superfamily member 8; CD153; CD30-L; CD30 ligand; CD153 antigen; CD30 antigen ligand; CD30L; MGC138144;

**Gene ID** 944

**mRNA Refseq** NM\_001244

**Protein Refseq** NP\_001235

**MIM** 603875

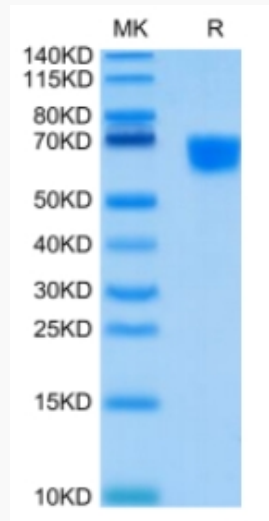
**UniProt ID** P32971

 Tel: 1-631-559-9269 1-516-512-3133

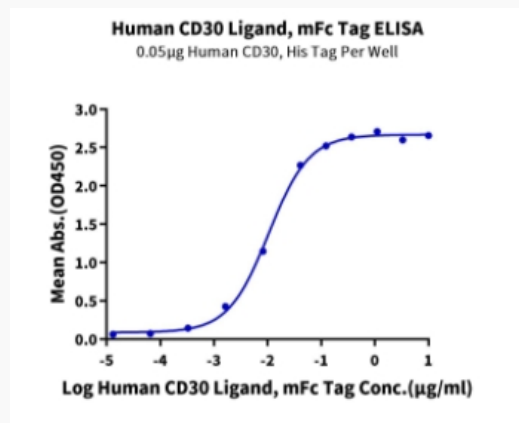
 Email: [info@creative-biomart.com](mailto:info@creative-biomart.com)  Fax: 1-631-938-8127

 45-1 Ramsey Road, Shirley, NY 11967, USA

**Tris-Bis PAGE**



**ELISA Data**



 Tel: 1-631-559-9269 1-516-512-3133

 Email: [info@creative-biomart.com](mailto:info@creative-biomart.com)  Fax: 1-631-938-8127

 45-1 Ramsey Road, Shirley, NY 11967, USA