

Active Recombinant Human TNFSF8 protein, Fc-tagged

Cat. No. TNFSF8-60H Lot. No. (See product label)

SPECIFICATION

Product Overview	Active Recombinant Human TNFSF8 protein(Gln 63-Asp 234)(NP_001235.1) was expressed in Human Cells, fused with the Fc region of human IgG1 at the N-terminus.
Species	Human
Source	Human Cells
ProteinLength	63-234 aa
Form	Lyophilized from sterile PBS, pH 7.4.
Bio-activity	Measured by its binding ability in a functional ELISA. Immobilized recombinant human CD30L at 20 µg/ml (100 µl/well) can bind biotinylated human CD30 with a linear range of 0.31-20 ng/ml.
Molecular Mass	The recombinant human Fc/CD30L is a disulfide-linked homodimeric protein. The reduced monomer consists of 429 amino acids and has a predicted molecular mass of 47.8 kDa. As a result of glycosylation, the apparent molecular mass of rh Fc/CD30L monomer is approximately 60-65 kDa in SDS-PAGE under reducing conditions.
Endotoxin	< 1.0 EU per µg of the protein as determined by the LAL method.
Purity	> 95 % as determined by SDS-PAGE

 Tel: 1-631-559-9269 1-516-512-3133

 Email: info@creative-biomart.com  Fax: 1-631-938-8127

 45-1 Ramsey Road, Shirley, NY 11967, USA

Storage Store it under sterile conditions at -20°C to -80°C upon receiving. Recommend to aliquot the protein into smaller quantities for optimal storage. Avoid repeated freeze-thaw cycles.

Reconstitution It is recommended that sterile water be added to the vial to prepare a stock solution of 0.2 ug/ul. Centrifuge the vial at 4°C before opening to recover the entire contents.

GENE INFORMATION

Gene Name TNFSF8 tumor necrosis factor (ligand) superfamily, member 8 [Homo sapiens]

Official Symbol TNFSF8

Synonyms TNFSF8; tumor necrosis factor (ligand) superfamily, member 8; CD30LG; tumor necrosis factor ligand superfamily member 8; CD153; CD30-L; CD30 ligand; CD153 antigen; CD30 antigen ligand; CD30L; MGC138144;

Gene ID 944

mRNA Refseq NM_001244

Protein Refseq NP_001235

MIM 603875

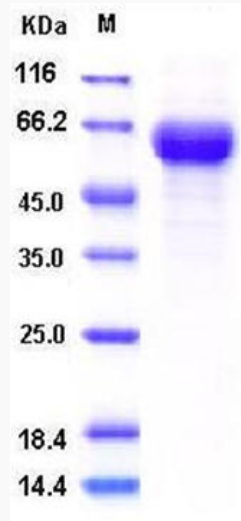
UniProt ID P32971

 Tel: 1-631-559-9269 1-516-512-3133

 Email: info@creative-biomart.com  Fax: 1-631-938-8127

 45-1 Ramsey Road, Shirley, NY 11967, USA

SDS-PAGE



 Tel: 1-631-559-9269 1-516-512-3133

 Email: info@creative-biomart.com  Fax: 1-631-938-8127

 45-1 Ramsey Road, Shirley, NY 11967, USA