

Recombinant Human TNNC1 protein, His-tagged

Cat. No. TNNC1-5643H Lot. No. (See product label)

SPECIFICATION

Product Overview	Recombinant Human TNNC1 protein(P63316)(1-161aa), fused with C-terminal His tag, was expressed in Insect cells.
Species	Human
Source	Insect cells
ProteinLength	1-161aa
Tag	C-His
Form	If the delivery form is liquid, the default storage buffer is Tris/PBS-based buffer, 5%-50% glycerol. If the delivery form is lyophilized powder, the buffer before lyophilization is Tris/PBS-based buffer, 6% Trehalose, pH 8.0.
Molecular Mass	19.5 kDa
Purity	Greater than 85% as determined by SDS-PAGE.
Storage	Store at -20°C/-80°C upon receipt, aliquoting is necessary for mutiple use. Avoid repeated freeze-thaw cycles.
Reconstitution	We recommend that this vial be briefly centrifuged prior to opening to bring the contents to the bottom. Please reconstitute protein in deionized sterile water to a concentration of 0.1-1.0 mg/mL. We recommend to add 5-50% of glycerol (final

 Tel: 1-631-559-9269 1-516-512-3133

 Email: info@creative-biomart.com  Fax: 1-631-938-8127

 45-1 Ramsey Road, Shirley, NY 11967, USA

concentration) and aliquot for long-term storage at -20°C/-80°C.

AA Sequence

MDDIYKAAVEQLTEEQKNEFKAAFDIFVLGAEDGCISTKELGKVMRMLGQNPTPEEL
 QEMIDEVDEEDGSGTVDFDFEFLVMMVRCMKDDSKGKSEEELSDLFRMFDKNADGYI
 DLDELKIMLQATGETITEDDIEELMKDGDKNNDGRIDYDEFLEFMKGVE

GENE INFORMATION

Gene Name

TNNC1 troponin C type 1 (slow) [Homo sapiens]

Official Symbol

TNNC1

Synonyms

TNNC1; troponin C type 1 (slow); TNNC, troponin C, slow; troponin C, slow skeletal and cardiac muscles; troponin C1, slow; cardiac troponin C; slow twitch skeletal/cardiac muscle troponin C; TNC; TN-C; TNNC; CMD1Z; CMH13;

Gene ID

7134

mRNA Refseq

NM_003280

Protein Refseq

NP_003271

MIM

191040

UniProt ID

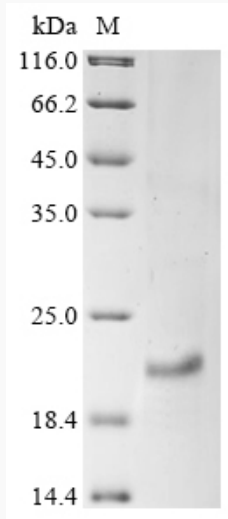
P63316

 Tel: 1-631-559-9269 1-516-512-3133

 Email: info@creative-biomart.com  Fax: 1-631-938-8127

 45-1 Ramsey Road, Shirley, NY 11967, USA

SDS-PAGE



 Tel: 1-631-559-9269 1-516-512-3133

 Email: info@creative-biomart.com  Fax: 1-631-938-8127

 45-1 Ramsey Road, Shirley, NY 11967, USA