

Recombinant Human TNNI3 Protein, MYC/DDK-tagged, C13 and N15-labeled

Cat. No. TNNI3-095H **Lot. No.** (See product label)

SPECIFICATION

Product Overview

TNNI3 MS Standard C13 and N15-labeled recombinant protein (NP_000354) with a C-terminal MYC/DDK tag, was expressed in HEK293 cells.

Species

Human

Source

HEK293

Description

Troponin I (TnI), along with troponin T (TnT) and troponin C (TnC), is one of 3 subunits that form the troponin complex of the thin filaments of striated muscle. TnI is the inhibitory subunit; blocking actin-myosin interactions and thereby mediating striated muscle relaxation. The TnI subfamily contains three genes: TnI-skeletal-fast-twitch, TnI-skeletal-slow-twitch, and TnI-cardiac. This gene encodes the TnI-cardiac protein and is exclusively expressed in cardiac muscle tissues. Mutations in this gene cause familial hypertrophic cardiomyopathy type 7 (CMH7) and familial restrictive cardiomyopathy (RCM).

Molecular Mass

23.8 kDa

AA Sequence

MADGSSDAAREPRPAPAPIRRRRSSNYRAYATEPHAKKKSKISASRKLQLKTLTLLQIAK
 QELEREAEERRGEKGRALSTRCQPLELAGLGFAELQDLCRQLHARVDKVDDEERYDI
 EAKVTKNITEIADLTQKIFDLRGKFKRPTLRRVRISADAMMQALLGARAKESLDLRAH
 LKQVKKEDTEKENREVGDWKRNIDALSGMEGRKKKFESTRTRPLEQKLISEEDLAA
 NDILDYKDDDDKV

 Tel: 1-631-559-9269 1-516-512-3133

 Email: info@creative-biomart.com  Fax: 1-631-938-8127

 45-1 Ramsey Road, Shirley, NY 11967, USA

Purity	> 80% as determined by SDS-PAGE and Coomassie blue staining
Stability	Stable for 3 months from receipt of products under proper storage and handling conditions.
Storage	Store at -80 centigrade. Avoid repeated freeze-thaw cycles.
Concentration	50 µg/mL as determined by BCA
Storage Buffer	100 mM glycine, 25 mM Tris-HCl, pH 7.3.

GENE INFORMATION

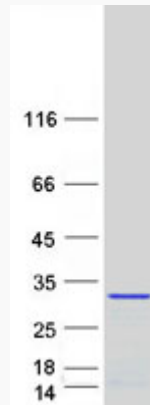
Gene Name	TNNI3 troponin I3, cardiac type [Homo sapiens (human)]
Official Symbol	TNNI3
Synonyms	TNNI3; troponin I3, cardiac type; CMD1FF; CMD2A; CMH7; cTnI; RCM1; TNNC1; troponin I, cardiac muscle; cardiomyopathy, dilated 2A (autosomal recessive); troponin I type 3 (cardiac)
Gene ID	7137
mRNA Refseq	NM_000363
Protein Refseq	NP_000354
MIM	191044
UniProt ID	P19429

 Tel: 1-631-559-9269 1-516-512-3133

 Email: info@creative-biomart.com  Fax: 1-631-938-8127

 45-1 Ramsey Road, Shirley, NY 11967, USA

SDS-PAGE



 Tel: 1-631-559-9269 1-516-512-3133

 Email: info@creative-biomart.com  Fax: 1-631-938-8127

 45-1 Ramsey Road, Shirley, NY 11967, USA