

Recombinant Human TNNI3, His-tagged

Cat. No. TNNI3-27665H Lot. No. (See product label)

SPECIFICATION

Product Overview	Recombinant Human TNNI3 was expressed as 6*his-tagged fusion protein by E.Coli and purified by Ni-sepharose.
Species	Human
Source	E.coli
Description	Troponin I (TnI), along with troponin T (TnT) and troponin C (TnC), is one of 3 subunits that form the troponin complex of the thin filaments of striated muscle. TnI is the inhibitory subunit; blocking actin-myosin interactions and thereby mediating striated muscle relaxation. The TnI subfamily contains three genes: TnI-skeletal-fast-twitch, TnI-skeletal-slow-twitch, and TnI-cardiac. This gene encodes the TnI-cardiac protein and is exclusively expressed in cardiac muscle tissues. Mutations in this gene cause familial hypertrophic cardiomyopathy type 7 (CMH7) and familial restrictive cardiomyopathy (RCM).
Antigen peptideregion	1-110aa
Storagebuffer	1M PBS (58mM Na ₂ HPO ₄ , 17mM NaH ₂ PO ₄ , 68mM NaCl, pH8.) added with 300mM Imidazole and 0.7% Sarcosyl, 15%glycerol.
Storage	The protein is stored in PBS buffer at -20 oC. Repeated freezethaw cycles should be avoided.

 Tel: 1-631-559-9269 1-516-512-3133

 Email: info@creative-biomart.com  Fax: 1-631-938-8127

 45-1 Ramsey Road, Shirley, NY 11967, USA

OfficialSymbol TNNI3

GENE INFORMATION

Gene Name TNNI3 troponin I type 3 (cardiac) [Homo sapiens]

Synonyms TNNI3; troponin I type 3 (cardiac); CMH7; RCM1; cTnI; CMD2A; TNNC1; MGC116817; CMD1FF; troponin I, cardiac; Troponin I, cardiac muscle; Cardiac troponin I; familial hypertrophic cardiomyopathy 7

Gene ID 7137

mRNA Refseq NM_000363

Protein Refseq NP_000354

MIM 191044

UniProt ID P19429

Chromosome Location 19q13.4

Pathway Hypertrophic cardiomyopathy (HCM); Muscle contraction; Cardiac muscle contraction

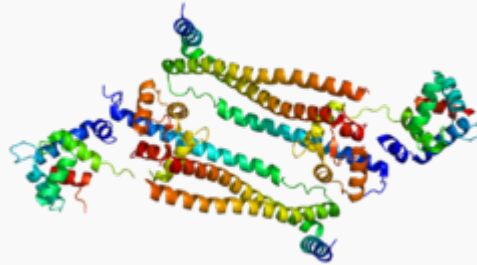
Function actin binding; calcium-dependent protein binding; protein domain specific binding; protein kinase binding; troponin C binding; troponin T binding; calcium channel inhibitor activity

 Tel: 1-631-559-9269 1-516-512-3133

 Email: info@creative-biomart.com  Fax: 1-631-938-8127

 45-1 Ramsey Road, Shirley, NY 11967, USA

PDB rendering
based on 1j1d.



 Tel: 1-631-559-9269 1-516-512-3133

 Email: info@creative-biomart.com  Fax: 1-631-938-8127

 45-1 Ramsey Road, Shirley, NY 11967, USA