

# Recombinant Full Length Human TNNI3 Protein, C-Flag-tagged

Cat. No. TNNI3-809HFL Lot. No. (See product label)

## SPECIFICATION

**Product Overview** Recombinant Full Length Human TNNI3 Protein, fused to Flag-tag at C-terminus, was expressed in Mammalian cells.


**Species** Human

**Source** Mammalian Cells

**Description** Troponin I (TnI), along with troponin T (TnT) and troponin C (TnC), is one of 3 subunits that form the troponin complex of the thin filaments of striated muscle. TnI is the inhibitory subunit; blocking actin-myosin interactions and thereby mediating striated muscle relaxation. The TnI subfamily contains three genes: TnI-skeletal-fast-twitch, TnI-skeletal-slow-twitch, and TnI-cardiac. This gene encodes the TnI-cardiac protein and is exclusively expressed in cardiac muscle tissues. Mutations in this gene cause familial hypertrophic cardiomyopathy type 7 (CMH7) and familial restrictive cardiomyopathy (RCM). Troponin I is useful in making a diagnosis of heart failure, and of ischemic heart disease. An elevated level of troponin is also now used as indicator of acute myocardial injury in patients hospitalized with moderate/severe Coronavirus Disease 2019 (COVID-19). Such elevation has also been associated with higher risk of mortality in cardiovascular disease patients hospitalized due to COVID-19.

**Form** 25 mM Tris HCl, pH 7.3, 100 mM glycine, 10% glycerol.

**Molecular Mass** 23.8 kDa

 Tel: 1-631-559-9269 1-516-512-3133

 Email: [info@creative-biomart.com](mailto:info@creative-biomart.com)  Fax: 1-631-938-8127

 45-1 Ramsey Road, Shirley, NY 11967, USA

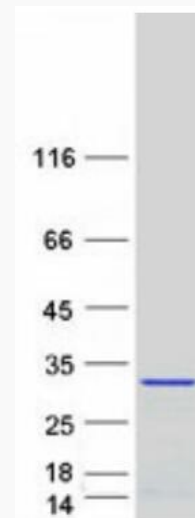


<b>AA Sequence</b>	MADGSSDAAREPRPAPAPIRRRSSNYRAYATEPHAKKKSKISASRKLQLKTLTLLQIAK QELEREAEERRG EKGRALSTRCQPLELAGLGFELQDLRCRQLHARVDKVDDEERYDI EAKVTKNITEIADLTQKIFDLRGKFK RPTLRRVRISADAMMQALLGARAKESLDLRAH LKQVKKEDTEKENREVGDWKRNIDALSGMEGRKKKFESTRTRPLEQKLISEEDLAA NDILDYKDDDDKV
<b>Purity</b>	> 80% as determined by SDS-PAGE and Coomassie blue staining.
<b>Stability</b>	Stable for 12 months from the date of receipt of the product under proper storage and handling conditions. Avoid repeated freeze-thaw cycles.
<b>Storage</b>	Store at -80 centigrade.
<b>Concentration</b>	>50 ug/mL as determined by microplate BCA method.
<b>Preparation</b>	Recombinant protein was captured through anti-DDK affinity column followed by conventional chromatography steps.
<b>Protein Families</b>	Druggable Genome, ES Cell Differentiation/IPS, Stem cell - Pluripotency
<b>Protein Pathways</b>	Cardiac muscle contraction, Dilated cardiomyopathy, Hypertrophic cardiomyopathy (HCM)
<b>Full Length</b>	Full L.


## GENE INFORMATION

<b>Gene Name</b>	TNNI3 troponin I3, cardiac type [ Homo sapiens (human) ]
<b>Official Symbol</b>	TNNI3


<b>Synonyms</b>	CMH7; RCM1; cTnl; CMD2A; TNNC1; CMD1FF
<b>Gene ID</b>	7137
<b>mRNA Refseq</b>	NM_000363.5
<b>Protein Refseq</b>	NP_000354.4
<b>MIM</b>	191044
<b>UniProt ID</b>	P19429



Coomassie blue staining of purified TNNI3 protein.

 Tel: 1-631-559-9269 1-516-512-3133

 Email: [info@creative-biomart.com](mailto:info@creative-biomart.com)  Fax: 1-631-938-8127

 45-1 Ramsey Road, Shirley, NY 11967, USA