

## Recombinant Human TNNT2 Protein, His-tagged

Cat. No. TNNT2-462H Lot. No. (See product label)

### SPECIFICATION

<b>Product Overview</b>	Recombinant Human TNNT2 Protein (Met1-Lys295) with N-His tag was expressed in E. coli.
<b>Species</b>	Human
<b>Source</b>	E.coli
<b>ProteinLength</b>	Met1-Lys295
<b>Description</b>	This gene encodes the cardiac isoform of troponin T. The encoded protein is the tropomyosin-binding subunit of the troponin complex, which is located on the thin filament of striated muscles and regulates muscle contraction in response to alterations in intracellular calcium ion concentration. Mutations in this gene have been associated with familial hypertrophic cardiomyopathy as well as with dilated cardiomyopathy.
<b>Form</b>	Freeze-dried powder
<b>Molecular Mass</b>	Predicted Molecular Mass: 23.6 kDa Accurate Molecular Mass: 70 kDa
<b>Purity</b>	> 90%
<b>Applications</b>	Positive Control; Immunogen; SDS-PAGE; WB.

 Tel: 1-631-559-9269 1-516-512-3133

 Email: [info@creative-biomart.com](mailto:info@creative-biomart.com)  Fax: 1-631-938-8127

 45-1 Ramsey Road, Shirley, NY 11967, USA

<b>Stability</b>	The thermal stability is described by the loss rate. The loss rate was determined by accelerated thermal degradation test, that is, incubate the protein at 37 centigrade for 48h, and no obvious degradation and precipitation were observed. The loss rate is less than 5% within the expiration date under appropriate storage condition.
<b>Storage</b>	Avoid repeated freeze/thaw cycles. Store at 2-8 centigrade for one month. Aliquot and store at -80 centigrade for 12 months.
<b>Storage Buffer</b>	PBS, pH7.4, containing 0.01% SKL, 1 mM DTT, 5% Trehalose and Proclin300.
<b>Reconstitution</b>	Reconstitute in sterile water to a concentration of 0.1-1.0 mg/mL. Do not vortex.

## GENE INFORMATION

<b>Gene Name</b>	TNNT2 troponin T type 2 (cardiac) [ Homo sapiens (human) ]
<b>Official Symbol</b>	TNNT2
<b>Synonyms</b>	TNNT2; troponin T type 2 (cardiac); cardiomyopathy, hypertrophic 2, CMH2, troponin T2, cardiac; troponin T, cardiac muscle; troponin T2, cardiac; cardiac muscle troponin T; cardiomyopathy, hypertrophic 2; cardiomyopathy, dilated 1D (autosomal dominant); CMH2; RCM3; TnTC; cTnT; CMPD2; LVNC6; MGC3889
<b>Gene ID</b>	7139
<b>mRNA Refseq</b>	NM_000364
<b>Protein Refseq</b>	NP_000355
<b>MIM</b>	191045

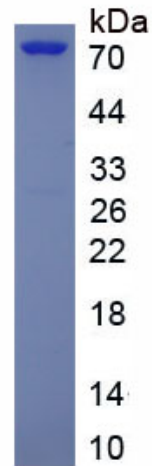
 Tel: 1-631-559-9269 1-516-512-3133

 Email: [info@creative-biomart.com](mailto:info@creative-biomart.com)  Fax: 1-631-938-8127

 45-1 Ramsey Road, Shirley, NY 11967, USA

UniProt ID

P45379



 Tel: 1-631-559-9269 1-516-512-3133

 Email: [info@creative-biomart.com](mailto:info@creative-biomart.com)  Fax: 1-631-938-8127

 45-1 Ramsey Road, Shirley, NY 11967, USA