

Recombinant Human TNNT2 Protein, His&GST-tagged

Cat. No. TNNT2-463H Lot. No. (See product label)

SPECIFICATION

Product Overview	Recombinant Human TNNT2 Protein (Ser2-Lys295) with N-His&GST tag was expressed in E. coli.
Species	Human
Source	E.coli
ProteinLength	Ser2-Lys295
Description	This gene encodes the cardiac isoform of troponin T. The encoded protein is the tropomyosin-binding subunit of the troponin complex, which is located on the thin filament of striated muscles and regulates muscle contraction in response to alterations in intracellular calcium ion concentration. Mutations in this gene have been associated with familial hypertrophic cardiomyopathy as well as with dilated cardiomyopathy.
Form	Freeze-dried powder
Molecular Mass	Predicted Molecular Mass: 65.5 kDa Accurate Molecular Mass: 70 kDa
Purity	> 90%
Applications	Positive Control; Immunogen; SDS-PAGE; WB.

 Tel: 1-631-559-9269 1-516-512-3133

 Email: info@creative-biomart.com  Fax: 1-631-938-8127

 45-1 Ramsey Road, Shirley, NY 11967, USA

Stability	The thermal stability is described by the loss rate. The loss rate was determined by accelerated thermal degradation test, that is, incubate the protein at 37 centigrade for 48h, and no obvious degradation and precipitation were observed. The loss rate is less than 5% within the expiration date under appropriate storage condition.
Storage	Avoid repeated freeze/thaw cycles. Store at 2-8 centigrade for one month. Aliquot and store at -80 centigrade for 12 months.
Storage Buffer	PBS, pH7.4, containing 0.01% SKL, 1 mM DTT, 5% Trehalose and Proclin300.
Reconstitution	Reconstitute in sterile water to a concentration of 0.1-1.0 mg/mL. Do not vortex.

GENE INFORMATION

Gene Name	TNNT2 troponin T type 2 (cardiac) [Homo sapiens (human)]
Official Symbol	TNNT2
Synonyms	TNNT2; troponin T type 2 (cardiac); cardiomyopathy, hypertrophic 2, CMH2, troponin T2, cardiac; troponin T, cardiac muscle; troponin T2, cardiac; cardiac muscle troponin T; cardiomyopathy, hypertrophic 2; cardiomyopathy, dilated 1D (autosomal dominant); CMH2; RCM3; TnTC; cTnT; CMPD2; LVNC6; MGC3889
Gene ID	7139
mRNA Refseq	NM_000364
Protein Refseq	NP_000355
MIM	191045

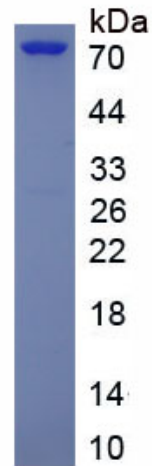
 Tel: 1-631-559-9269 1-516-512-3133

 Email: info@creative-biomart.com  Fax: 1-631-938-8127

 45-1 Ramsey Road, Shirley, NY 11967, USA

UniProt ID

P45379



 Tel: 1-631-559-9269 1-516-512-3133

 Email: info@creative-biomart.com  Fax: 1-631-938-8127

 45-1 Ramsey Road, Shirley, NY 11967, USA