

# Recombinant Human TNNT2 Protein, Myc/DDK-tagged, C13 and N15-labeled

Cat. No. TNNT2-5337H Lot. No. (See product label)

## SPECIFICATION

### Product Overview

TNNT2 MS Standard C13 and N15-labeled recombinant protein (NP\_000355) with a C-terminal MYC/DDK tag, was expressed in HEK293 cells.

### Species

Human

### Source

HEK293

### Description

The protein encoded by this gene is the tropomyosin-binding subunit of the troponin complex, which is located on the thin filament of striated muscles and regulates muscle contraction in response to alterations in intracellular calcium ion concentration. Mutations in this gene have been associated with familial hypertrophic cardiomyopathy as well as with dilated cardiomyopathy. Transcripts for this gene undergo alternative splicing that results in many tissue-specific isoforms, however, the full-length nature of some of these variants has not yet been determined.

### Molecular Mass

35.4 kDa

### AA Sequence

```
MSDIEEVVEEYEEEEQEEAAVEEEEDWREDEDEQEEAAEEDAEAEAEETEETRAEED
EEEEAKEAEDGPMEE SKPKPRSFMPNLVPPKIPDGERVDFDDIHRKRMEKDLNEL
QALIEAHFENRKKEEEEELVSLKDRIERRRAERA EQQRIRNEREKERQNLAEERARR
EEEEENRRKAEDEARKKKALSMMHFGGYIQKTERKSGKRQTEREKKKKILAERRKV
LAIDLHNLNEDQLREKAKELWQSIYNLEAEKFDLQEKFKQQKYEINVLRRNRINDNQKVS
KTRGKAKVTGRWKTRTRPLEQKLISEEDLAANDILDYKDDDDKV
```

 Tel: 1-631-559-9269 1-516-512-3133

 Email: [info@creative-biomart.com](mailto:info@creative-biomart.com)  Fax: 1-631-938-8127

 45-1 Ramsey Road, Shirley, NY 11967, USA

<b>Purity</b>	> 80% as determined by SDS-PAGE and Coomassie blue staining
<b>Stability</b>	Stable for 3 months from receipt of products under proper storage and handling conditions.
<b>Storage</b>	Store at -80 centigrade. Avoid repeated freeze-thaw cycles.
<b>Concentration</b>	50 µg/mL as determined by BCA
<b>Storage Buffer</b>	100 mM glycine, 25 mM Tris-HCl, pH 7.3.

## GENE INFORMATION

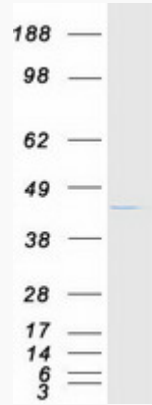
<b>Gene Name</b>	TNNT2 troponin T2, cardiac type [ Homo sapiens (human) ]
<b>Official Symbol</b>	TNNT2
<b>Synonyms</b>	TNNT2; troponin T type 2 (cardiac); cardiomyopathy, hypertrophic 2, CMH2, troponin T2, cardiac; troponin T, cardiac muscle; troponin T2, cardiac; cardiac muscle troponin T; cardiomyopathy, hypertrophic 2; cardiomyopathy, dilated 1D (autosomal dominant); CMH2; RCM3; TnTC; cTnT; CMPD2; LVNC6; MGC3889;
<b>Gene ID</b>	7139
<b>mRNA Refseq</b>	NM_000364
<b>Protein Refseq</b>	NP_000355
<b>MIM</b>	191045
<b>UniProt ID</b>	P45379

 Tel: 1-631-559-9269 1-516-512-3133

 Email: [info@creative-biomart.com](mailto:info@creative-biomart.com)  Fax: 1-631-938-8127

 45-1 Ramsey Road, Shirley, NY 11967, USA

**SDS-PAGE**



 Tel: 1-631-559-9269 1-516-512-3133

 Email: [info@creative-biomart.com](mailto:info@creative-biomart.com)  Fax: 1-631-938-8127

 45-1 Ramsey Road, Shirley, NY 11967, USA