

# Recombinant Human TOM1L2 Protein, Myc/DDK-tagged, C13 and N15-labeled

Cat. No. TOM1L2-885H Lot. No. (See product label)

## SPECIFICATION

### Product Overview

TOM1L2 MS Standard C13 and N15-labeled recombinant protein (NP\_001076437) with a C-terminal MYC/DDK tag, was expressed in HEK293 cells.

### Species

Human

### Source

HEK293

### Description

This gene belongs to a small gene family whose members have an N-terminal VHS domain followed by a GAT domain; domains which typically participate in vesicular trafficking. The canonical protein encoded by this gene also has a C-terminal clathrin binding motif. This protein has been shown to interact with Tollip, clathrin and ubiquitin and is thought to play a role in endosomal sorting. This gene resides in the 3.7 Mb deletion of chromosome region 17p11.2 that is associated with Smith-Magenis syndrome. Alternative splicing results in multiple transcript variants encoding distinct proteins.

### Molecular Mass

55.4 kDa

### AA Sequence

MEFLGNPFSTPVGQCLEKATDGSLQSEDWTLNMEICDIINETEEGPKDAIRALKKRL  
 NGNRNYREVMLALTVLETCVKNCGHRFHILVANRDFIDSVLVKIISPKNNPPTIVQDK  
 VLALIQAWADAFRSSPDLTGVVHIYEELKRKGVEFPMADLDALSPIHTPQRSVPEVD  
 PAATMPRSQSQQRTSAGSYSSPPPAPYSAPQAPALSVTGPITANSEQIARLRSELDV  
 VRGNTKVMSEMLTEMVPGQEDSSDLELLQELNRTC RAMQQRIVELISRVSNEEVTE

 Tel: 1-631-559-9269 1-516-512-3133

 Email: [info@creative-biomart.com](mailto:info@creative-biomart.com)  Fax: 1-631-938-8127

 45-1 Ramsey Road, Shirley, NY 11967, USA



ELLHVNDLNNVFLRYERFERYSRGRSVQNASNGVLNEVTEDNLIDLPGSPAVVS  
 PMVGNTAPPSSLSSQLAGLDLGTESVSGTLSSLQQCNPRDGFDMFAQTRGNSLAE  
 QRKTVTYEDPQAVGGLASALDNRKQSSEGIPVAQPSVMDDIEVWLRTDLKGDDLEE  
 GVTSEEFDKFLEERAKAAEMVPDLPSPPMEAPAPASNPSGRKKPERSEDALFALTR  
 TRPLEQKLISEEDLAANDILDYKDDDDKV

<b>Purity</b>	> 80% as determined by SDS-PAGE and Coomassie blue staining
<b>Stability</b>	Stable for 3 months from receipt of products under proper storage and handling conditions.
<b>Storage</b>	Store at -80 centigrade. Avoid repeated freeze-thaw cycles.
<b>Concentration</b>	50 µg/mL as determined by BCA
<b>Storage Buffer</b>	100 mM glycine, 25 mM Tris-HCl, pH 7.3.

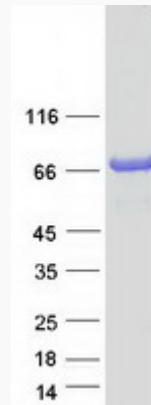
## GENE INFORMATION

<b>Gene Name</b>	TOM1L2 target of myb1 like 2 membrane trafficking protein [ Homo sapiens (human) ]
<b>Official Symbol</b>	TOM1L2
<b>Synonyms</b>	TOM1L2; target of myb1-like 2 (chicken); target of myb1 (chicken) homolog like 1;
<b>Gene ID</b>	146691
<b>mRNA Refseq</b>	NM_001082968
<b>Protein Refseq</b>	NP_001076437

**MIM** 615519

**UniProt ID** Q6ZVM7

**SDS-PAGE**



 Tel: 1-631-559-9269 1-516-512-3133

 Email: [info@creative-biomart.com](mailto:info@creative-biomart.com)  Fax: 1-631-938-8127

 45-1 Ramsey Road, Shirley, NY 11967, USA