

Recombinant Full Length Human TOMM20 Protein, C-Flag-tagged

Cat. No. TOMM20-800HFL **Lot. No.** (See product label)

SPECIFICATION

Product Overview	Recombinant Full Length Human TOMM20 Protein, fused to Flag-tag at C-terminus, was expressed in Mammalian cells.
Species	Human
Source	Mammalian Cells
Description	Enables protein-transporting ATPase activity and unfolded protein binding activity. Involved in protein targeting to mitochondrion. Located in mitochondria-associated endoplasmic reticulum membrane and mitochondrial outer membrane.
Form	25 mM Tris HCl, pH 7.3, 100 mM glycine, 10% glycerol.
Molecular Mass	16.1 kDa
AA Sequence	MVGRNSAIAAGVCGALFIGYCIYFDRKRRSDPNFKNRLRERRKKQKLAKERAGLSKL PDLKDAEAVQKFF LEEIQLGEELLAQGEYEKGV DHLTNAI AVCGQPQQLLQVLQQTLL PPPVFQMLLTKLPTISQRIVSAQSLA EDDVETRTRPLEQKLISEEDLAANDILDYKDDDDKV
Purity	> 80% as determined by SDS-PAGE and Coomassie blue staining.
Stability	Stable for 12 months from the date of receipt of the product under proper storage and handling conditions. Avoid repeated freeze-thaw cycles.

 Tel: 1-631-559-9269 1-516-512-3133

 Email: info@creative-biomart.com  Fax: 1-631-938-8127

 45-1 Ramsey Road, Shirley, NY 11967, USA

Storage	Store at -80 centigrade.
Concentration	>50 ug/mL as determined by microplate BCA method.
Preparation	Recombinant protein was captured through anti-DDK affinity column followed by conventional chromatography steps.
Protein Families	Druggable Genome, Transmembrane
Full Length	Full L.

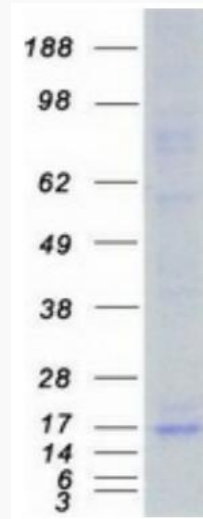
GENE INFORMATION

Gene Name	TOMM20 translocase of outer mitochondrial membrane 20 [Homo sapiens (human)]
Official Symbol	TOMM20
Synonyms	MAS20; MOM19; TOM20
Gene ID	9804
mRNA Refseq	NM_014765.3
Protein Refseq	NP_055580.1
MIM	601848
UniProt ID	Q15388

 Tel: 1-631-559-9269 1-516-512-3133

 Email: info@creative-biomart.com  Fax: 1-631-938-8127

 45-1 Ramsey Road, Shirley, NY 11967, USA



Coomassie blue staining of purified TOMM20 protein.

 Tel: 1-631-559-9269 1-516-512-3133

 Email: info@creative-biomart.com  Fax: 1-631-938-8127

 45-1 Ramsey Road, Shirley, NY 11967, USA