

Recombinant Human TOMM22 Protein, GST-tagged

Cat. No. TOMM22-03H Lot. No. (See product label)

SPECIFICATION

Product Overview	Human TOMM22 full-length ORF (AAH09363, 1 a.a. - 142 a.a.) recombinant protein with GST-tag at N-terminal was expressed in Wheat Germ.
Species	Human
Source	Wheat Germ
Description	The protein encoded by this gene is an integral membrane protein of the mitochondrial outer membrane. The encoded protein interacts with TOMM20 and TOMM40, and forms a complex with several other proteins to import cytosolic preproteins into the mitochondrion.
Molecular Mass	41.36 kDa
AA Sequence	MAAAVAAAGAGEPQSPDELLPKGDAEKPEEELEEDDDEELDETLSERLWGLTEMFP ERVRSAGATFDLSLFVAQKMYRFSRAALWIGTTSFMILVLPVVFETEKLQMEQQQQ LQQRQILLGPNTGLSGGMPGALPSLPGKI
Applications	Enzyme-linked Immunoabsorbent Assay Western Blot (Recombinant protein) Antibody Production Protein Array
Storage	Store at -80 centigrade. Aliquot to avoid repeated freezing and thawing.

 Tel: 1-631-559-9269 1-516-512-3133

 Email: info@creative-biomart.com  Fax: 1-631-938-8127

 45-1 Ramsey Road, Shirley, NY 11967, USA

Storage Buffer 50 mM Tris-HCl, 10 mM reduced Glutathione, pH=8.0 in the elution buffer.

GENE INFORMATION

Gene Name TOMM22 translocase of outer mitochondrial membrane 22 [Homo sapiens (human)]

Official Symbol TOMM22

Synonyms TOMM22; translocase of outer mitochondrial membrane 22; 1C9-2; TOM22; MST065; MSTP065; mitochondrial import receptor subunit TOM22 homolog; mitochondrial import receptor Tom22; translocase of outer membrane 22 kDa subunit homolog; translocase of outer mitochondrial membrane 22 homolog

Gene ID 56993

mRNA Refseq NM_020243

Protein Refseq NP_064628

MIM 607046

UniProt ID Q9NS69

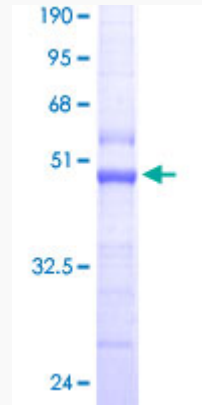
 Tel: 1-631-559-9269 1-516-512-3133

 Email: info@creative-biomart.com  Fax: 1-631-938-8127

 45-1 Ramsey Road, Shirley, NY 11967, USA



**Quality Control
Testing**



12.5% SDS-PAGE Stained with Coomassie Blue.

Tel: 1-631-559-9269 1-516-512-3133

Email: info@creative-biomart.com Fax: 1-631-938-8127

45-1 Ramsey Road, Shirley, NY 11967, USA