

Recombinant Human TOMM22 Protein, GST-tagged

Cat. No. TOMM22-04H **Lot. No.** (See product label)

SPECIFICATION

Product Overview	Human TOMM22 partial ORF (NP_064628, 12 a.a. - 84 a.a.) recombinant protein with GST-tag at N-terminal was expressed in Wheat Germ.
Species	Human
Source	Wheat Germ
Description	The protein encoded by this gene is an integral membrane protein of the mitochondrial outer membrane. The encoded protein interacts with TOMM20 and TOMM40, and forms a complex with several other proteins to import cytosolic preproteins into the mitochondrion.
Molecular Mass	33.77 kDa
AA Sequence	EPQSPDELLPKGDAEKPEEELEEDDDEELDETLSERLWGLTEMFPERVRSAAAGATF DLSLFVAQKMYRFSRAA
Applications	Enzyme-linked Immunoabsorbent Assay Western Blot (Recombinant protein) Antibody Production Protein Array
Storage	Store at -80 centigrade. Aliquot to avoid repeated freezing and thawing.
Storage Buffer	50 mM Tris-HCl, 10 mM reduced Glutathione, pH=8.0 in the elution buffer.

 Tel: 1-631-559-9269 1-516-512-3133

 Email: info@creative-biomart.com  Fax: 1-631-938-8127

 45-1 Ramsey Road, Shirley, NY 11967, USA

GENE INFORMATION

Gene Name TOMM22 translocase of outer mitochondrial membrane 22 [Homo sapiens (human)]

Official Symbol TOMM22

Synonyms TOMM22; translocase of outer mitochondrial membrane 22; 1C9-2; TOM22; MST065; MSTP065; mitochondrial import receptor subunit TOM22 homolog; mitochondrial import receptor Tom22; translocase of outer membrane 22 kDa subunit homolog; translocase of outer mitochondrial membrane 22 homolog

Gene ID 56993

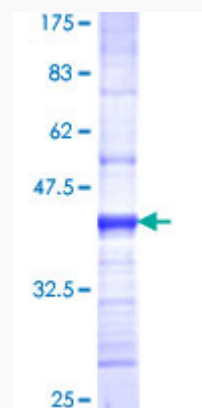
mRNA Refseq NM_020243

Protein Refseq NP_064628

MIM 607046

UniProt ID Q9NS69

Quality Control Testing



 Tel: 1-631-559-9269 1-516-512-3133

 Email: info@creative-biomart.com  Fax: 1-631-938-8127

 45-1 Ramsey Road, Shirley, NY 11967, USA



12.5% SDS-PAGE Stained with Coomassie Blue.

 Tel: 1-631-559-9269 1-516-512-3133

 Email: info@creative-biomart.com  Fax: 1-631-938-8127

 45-1 Ramsey Road, Shirley, NY 11967, USA