

# Recombinant Human TOMM34 Protein, Myc/DDK-tagged, C13 and N15-labeled

Cat. No. TOMM34-4966H Lot. No. (See product label)

## SPECIFICATION

<b>Product Overview</b>	TOMM34 MS Standard C13 and N15-labeled recombinant protein (NP_006800) with a C-terminal MYC/DDK tag, was expressed in HEK293 cells.
<b>Species</b>	Human
<b>Source</b>	HEK293
<b>Description</b>	The protein encoded by this gene is involved in the import of precursor proteins into mitochondria. The encoded protein has a chaperone-like activity, binding the mature portion of unfolded proteins and aiding their import into mitochondria. This protein, which is found in the cytoplasm and sometimes associated with the outer mitochondrial membrane, has a weak ATPase activity and contains 6 TPR repeats.
<b>Molecular Mass</b>	34.6 kDa
<b>AA Sequence</b>	MAPKFPDSVEELRAAGNESFRNGQYAEASALYGRALRVLQAQGSSDPEEESVLYS NRAACHLKDGNCRDCIKDCTSALALVPFSIKPLLRASAYEALEKYPMAYVDYKTVL QIDDNVTSAVEGINRMTRALMDSLGP EWRLKLP SIPLVPVSAQKRWNSLPS ENHKE MAKSKSKETTATKNRVP SAGDVEKARVLKEEGNELVKKGNHKKAI EKYSESL LCSNL ESATYSNRALCYLVLKQY TEAVKDC TEALKLDGKNVKAFYRR AQAHKALKDYKSSFA DISNLLQIEPRNGPAQKLRQEVKQNLHTRTRPLEQKLISEEDLAANDILDYKDDDDKV
<b>Purity</b>	> 80% as determined by SDS-PAGE and Coomassie blue staining

 Tel: 1-631-559-9269 1-516-512-3133

 Email: [info@creative-biomart.com](mailto:info@creative-biomart.com)  Fax: 1-631-938-8127

 45-1 Ramsey Road, Shirley, NY 11967, USA

<b>Stability</b>	Stable for 3 months from receipt of products under proper storage and handling conditions.
<b>Storage</b>	Store at -80 centigrade. Avoid repeated freeze-thaw cycles.
<b>Concentration</b>	50 µg/mL as determined by BCA
<b>Storage Buffer</b>	100 mM glycine, 25 mM Tris-HCl, pH 7.3.

## GENE INFORMATION

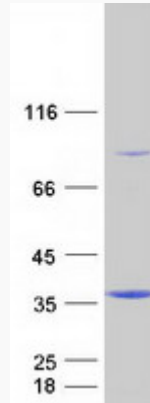
<b>Gene Name</b>	TOMM34 translocase of outer mitochondrial membrane 34 [ Homo sapiens (human) ]
<b>Official Symbol</b>	TOMM34
<b>Synonyms</b>	TOMM34; translocase of outer mitochondrial membrane 34; mitochondrial import receptor subunit TOM34; HTOM34P; outer mitochondrial membrane translocase (34kD); TOM34; hTom34; translocase of outer membrane 34 kDa subunit; URCC3;
<b>Gene ID</b>	10953
<b>mRNA Refseq</b>	NM_006809
<b>Protein Refseq</b>	NP_006800
<b>MIM</b>	616049
<b>UniProt ID</b>	Q15785

 Tel: 1-631-559-9269 1-516-512-3133

 Email: [info@creative-biomart.com](mailto:info@creative-biomart.com)  Fax: 1-631-938-8127

 45-1 Ramsey Road, Shirley, NY 11967, USA

**SDS-PAGE**



 Tel: 1-631-559-9269 1-516-512-3133

 Email: [info@creative-biomart.com](mailto:info@creative-biomart.com)  Fax: 1-631-938-8127

 45-1 Ramsey Road, Shirley, NY 11967, USA