

Recombinant Human TOMM40 protein, His-tagged

Cat. No. TOMM40-31H Lot. No. (See product label)

SPECIFICATION

Product Overview	Recombinant TOMM40 protein(transcript variant 2), fused to His-tag at N-terminus, was expressed in E.coli and purified by using conventional chromatography techniques.
Species	Human
Source	E.coli
Description	The protein encoded by this gene is localized in the outer membrane of the mitochondria. It is the channel-forming subunit of the translocase of the mitochondrial outer membrane(TOM) complex that is essential for import of protein precursors into mitochondria. Alternatively spliced transcript variants have been found for this gene.
Form	50mM Tris, pH8.0, 8M Urea.
Molecular Mass	37.7 kDa
Purity	> 80% as determined by SDS-PAGE and Coomassie blue staining
Storage	Store at -20 or -80 centigrade
Concentration	> 50 µg/mL as determined by microplate BCA method

GENE INFORMATION

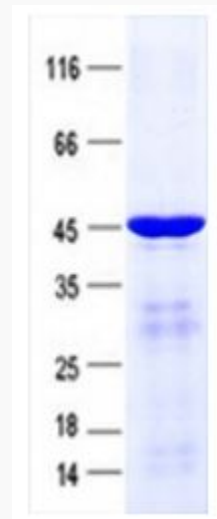
 Tel: 1-631-559-9269 1-516-512-3133

 Email: info@creative-biomart.com  Fax: 1-631-938-8127

 45-1 Ramsey Road, Shirley, NY 11967, USA

Gene Name	TOMM40
Official Symbol	TOMM40
Synonyms	C19orf1; D19S1177E; PER-EC1; PEREC1; TOM40
Gene ID	10452
mRNA Refseq	NM_001128916.1
Protein Refseq	NP_001122388.1
MIM	608061
UniProt ID	O96008

**SDS-PAGE of
TOMM40-31H**



 Tel: 1-631-559-9269 1-516-512-3133

 Email: info@creative-biomart.com  Fax: 1-631-938-8127

 45-1 Ramsey Road, Shirley, NY 11967, USA